

Na'e fakafou 'ia Mōsesē 'a hono fekau'i 'e he 'Eikí 'a Felo ke fakatau'atāina'i 'a e kakai 'Isilelí. Ka na'e 'ikai ke talangofua 'a Felo ki he fekau 'a e 'Otuá. Fakatauhoa 'a e ngaahi fuó ki he **ngaahi mahaki faka'auha na'e tuku mai 'e he 'Otuá ke fakavaivai'i 'aki 'a Feló.**



Liliu e vai ko e toto



Mahamahaki e fanga pulú



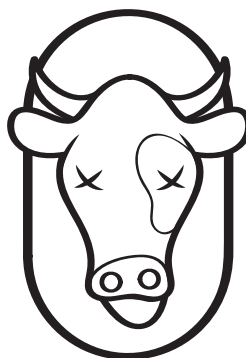
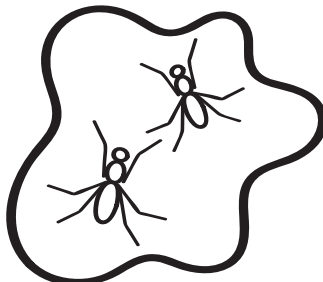
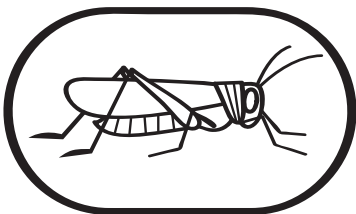
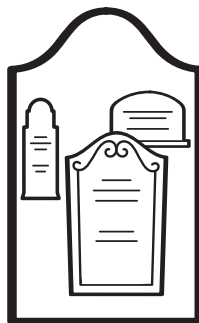
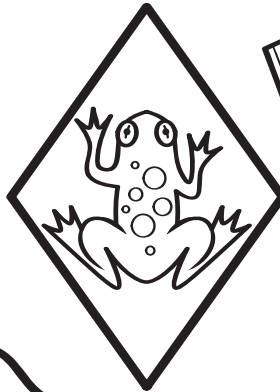
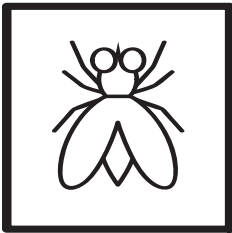
'Uha maka



Pekia 'a e foha lahí



Fanga he'e



Fakapo'uli 'i ha 'aho 'e tolu



Fanga langó



Fanga potó



Kutu



Pala

'Ekesōtosi 7-12



Na'e tokoni fēfē 'a 'Ēlone kia Mōsesé?