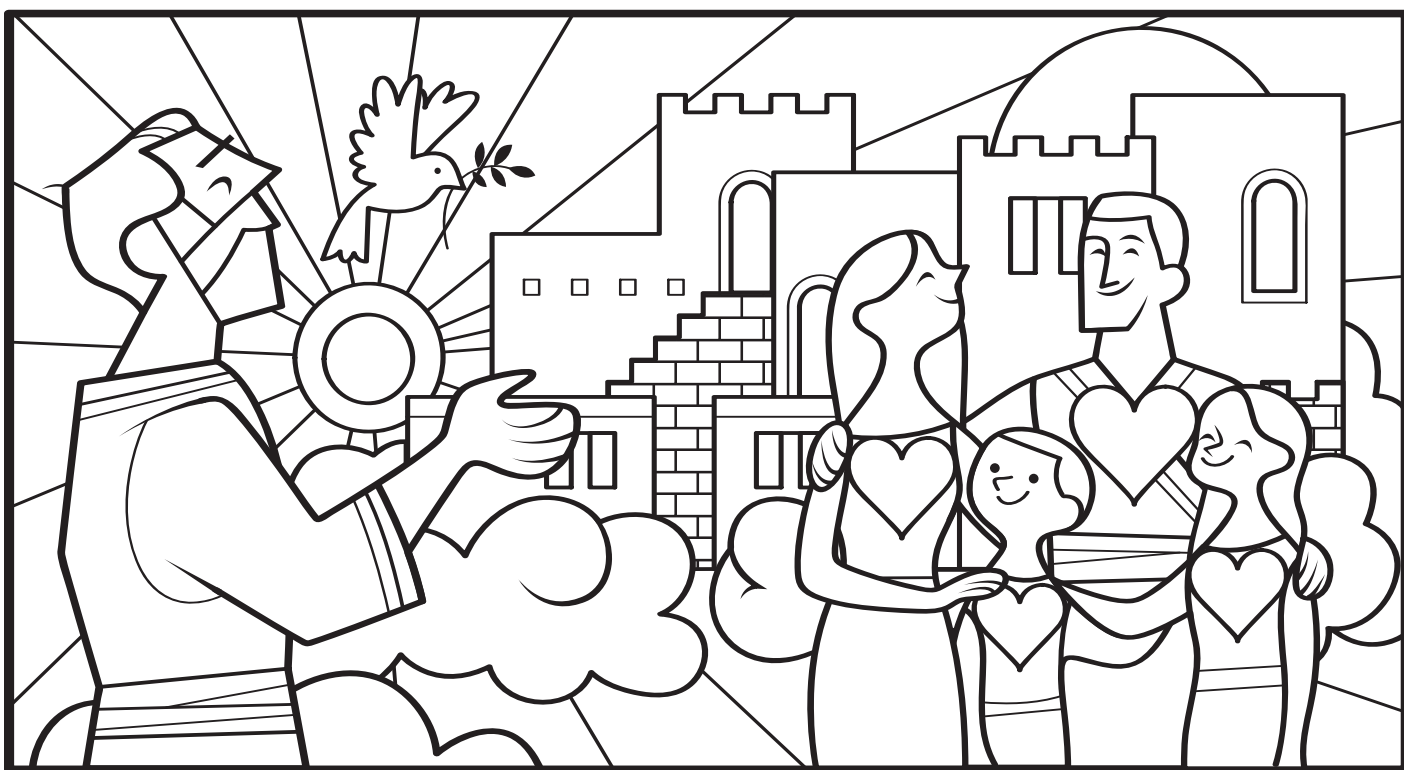
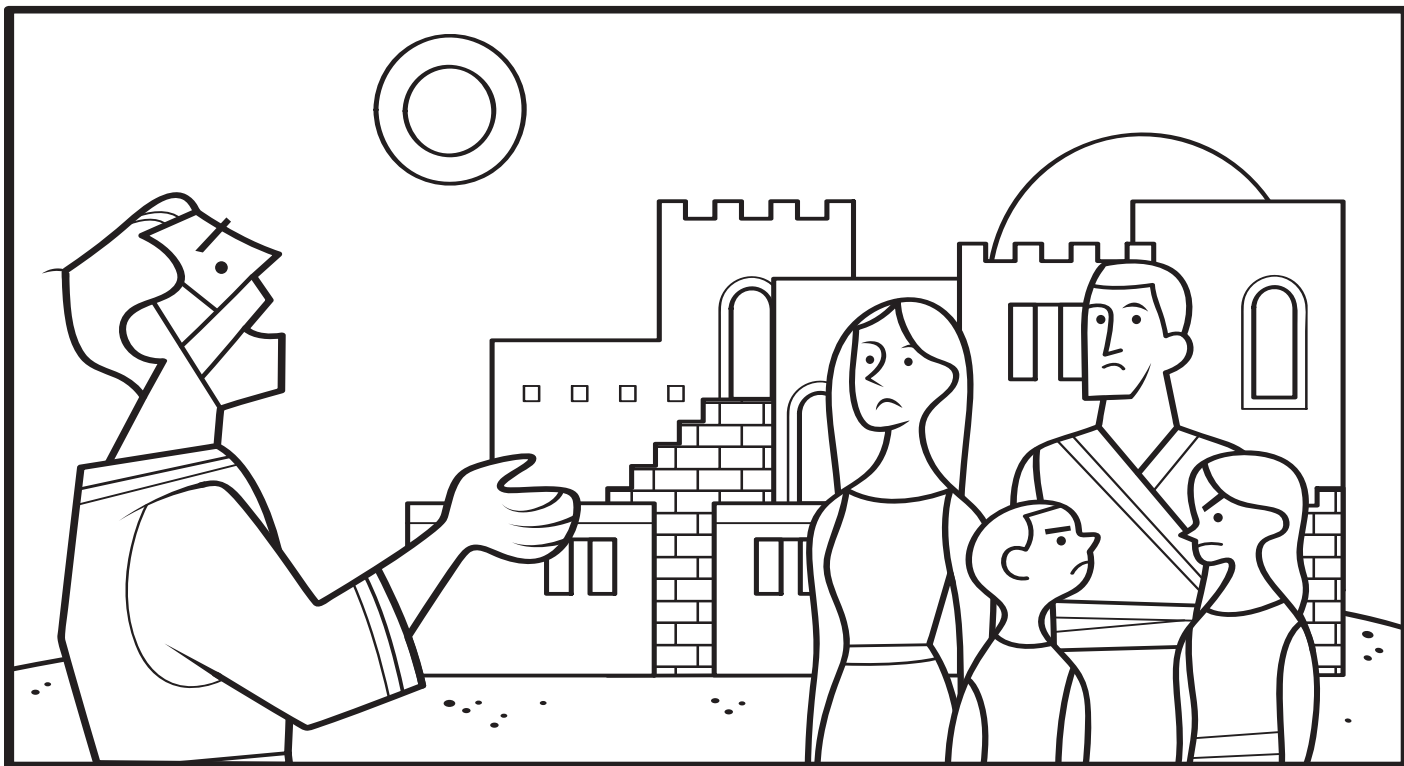


Na'e fekau 'e he 'Otuá 'a 'Īnoke ke ne ako'i 'a e kakaí ke nau fakatomala pea papitaiso. Kumi ha ngaahi faikehekehe 'e 13 'i he taimi na'e fakatomala ai 'a e kakaí pea 'ohake ai kinautolu ki he langí.



Mōsese 7

🔍 Ko e hā na'e ui ai 'e he 'Eikí 'a hono kakaí ko Saioné?