

A Great Work

For Solo voice, SAAT choir, and Piano

Words and Music by Nik Day

$\text{♩} = 75$

Piano *mp*

5 *mp*
There is a work to do that's been pre-pared for you long be-fore the world was made.

9
You have the strength you need to cross the storm - y seas that you will

12
find a - long the way. He is your re - fuge from the storm. And you will ne - ver be a -

Detailed description: The score is in 4/4 time with a key signature of three sharps (F#, C#, G#). The piano part consists of chords in the right hand and single notes in the left hand. The vocal line is in the treble clef. The lyrics are: 'There is a work to do that's been pre-pared for you long be-fore the world was made. You have the strength you need to cross the storm - y seas that you will find a - long the way. He is your re - fuge from the storm. And you will ne - ver be a -'.

16 *mf*

lone. This is a great work that we've been gi - ven. This is a part of His grand de-

S. A. I *mf*
S. A. unison

great work part of

A. II *mf*
T.

20

sign. So don't be wea - ry. He will be with_ you, and He will lead you through

S. A. I

wea - ry lead you

A. II
T.

24

the night _ in this great work. This great work. This is a great work.

S.
A. I

Great work, Great work, Great work!

A. II
T.

24

29

If you give Him your heart, He'll show you who you are and all His hopes and dreams for you.

S.
A. I

Ooh hopes and dreams

A. II
T.

29

33

And when you fol-low Him the great work will be-gin and per-fect love will win. This is a

S. *f* This is a

A. I. *div. f* Fol-low Him! Will be - gin! Win!

A. II T.

33

37

great work that we've been gi - ven. This is a part of His grand de-sign. — So don't be great work.

S. *f* unis.

A. I. Great work Part of

A. II T. *f*

37

41
wea - ry. He will be with you, and He will lead you through

S.
A. I
Wea - ry Lead you

A. II
T.

41

44
the night in this great work. This great work. This is a great work.

S.
in this great work. This great work. This is a great work.

A. I
Great work, Great work Great work

A. II
T.

44

48

ff

Musical staff for Soprano (S.) in treble clef, key of D major. It begins with a whole rest, followed by a quarter rest, then a series of eighth notes: D5, E5, F#5, G5, A5, B5, A5, G5, F#5, E5, D5. The staff ends with a fermata.

This is His work and glo - ry, and He wants you by His side

S.

ff

Musical staff for Soprano (S.) in treble clef, key of D major. It begins with a whole rest, followed by a quarter rest, then a series of eighth notes: D5, E5, F#5, G5, A5, B5, A5, G5, F#5, E5, D5. The staff ends with a fermata.

This is His work and glo - ry, and He wants you by His side

A. I

ff

Musical staff for Alto I (A. I.) in treble clef, key of D major. It features a melodic line starting with a quarter note D5, followed by eighth notes E5, F#5, G5, and a half note A5. The staff ends with a fermata.

Ah. Ooh

A. II

ff

Musical staff for Alto II (A. II.) in treble clef, key of D major. It features a melodic line starting with a quarter note D5, followed by eighth notes E5, F#5, G5, and a half note A5. The staff ends with a fermata.

Ah. Ooh.

T.

ff

Musical staff for Tenor (T.) in bass clef, key of D major. It begins with a whole rest, followed by a quarter rest, then a series of eighth notes: D4, E4, F#4, G4, A4, B4, A4, G4, F#4, E4, D4. The staff ends with a fermata.

This is His work and glo - ry, and He wants you by His side

48

ff

Piano accompaniment in treble and bass clefs, key of D major. The right hand plays a series of chords: D5, E5, F#5, G5, A5, B5, A5, G5, F#5, E5, D5. The left hand plays a series of notes: D4, E4, F#4, G4, A4, B4, A4, G4, F#4, E4, D4. The piece ends with a fermata.

51

Musical staff for Soprano (S.) in treble clef, key of D major, 7/8 time. The staff contains a melodic line with lyrics underneath. A dynamic marking of *mf* is placed above the staff.

so He can help you find your place in this great work that we've been gi - ven. This is a

S.

Musical staff for Soprano (S.) in treble clef, key of D major, 7/8 time. The staff contains a melodic line with lyrics underneath. A dynamic marking of *mf* is placed above the staff.

so He can help you find your place great work that we've been gi - ven

A. I

Musical staff for Alto I (A. I.) in treble clef, key of D major, 7/8 time. The staff contains a melodic line with lyrics underneath. A dynamic marking of *mf* is placed above the staff.

Ah. _____ great work that we've been gi - ven

A. II

Musical staff for Alto II (A. II.) in treble clef, key of D major, 7/8 time. The staff contains a melodic line with lyrics underneath. A dynamic marking of *mf* is placed above the staff.

Ah. _____

T.

Musical staff for Tenor (T.) in bass clef, key of D major, 7/8 time. The staff contains a melodic line with lyrics underneath. A dynamic marking of *mf* is placed above the staff.

so He can help you find your place

51

Piano accompaniment in treble and bass clefs, key of D major, 7/8 time. The right hand plays chords and the left hand plays a bass line. A dynamic marking of *mf* is placed below the right hand staff.

55



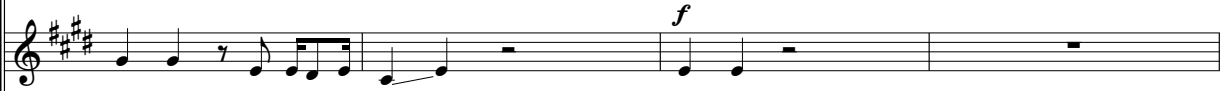
part of His grand de-sign. So don't be wea - ry. He will be with you, and He will

S.



part of His grand de-sign. So don't be wea - ry. He will be with you, and He will

A. I



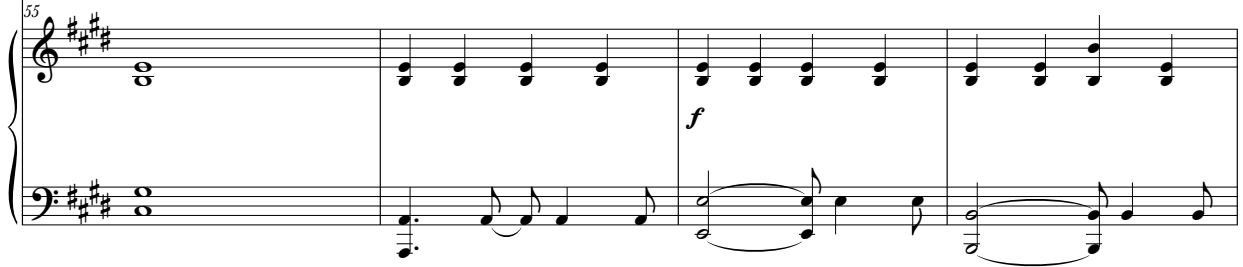
part of His grand de-sign. Wea - ry

A. II
T.



Wea - ry

55



Small Group

69

This is a great, This is a great, This is a great work. —

69

Small Group

73

This is a great, This is a great, This is a great work. —

73