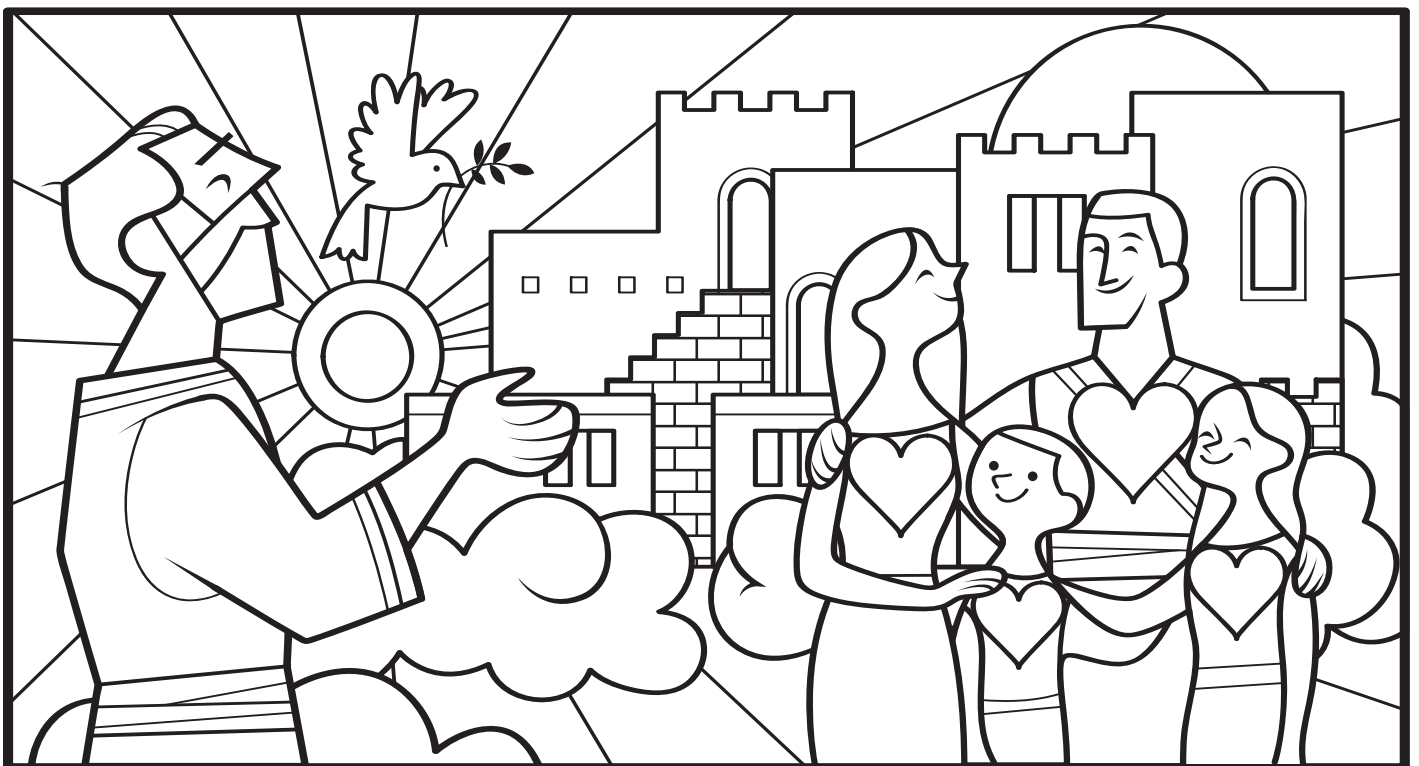
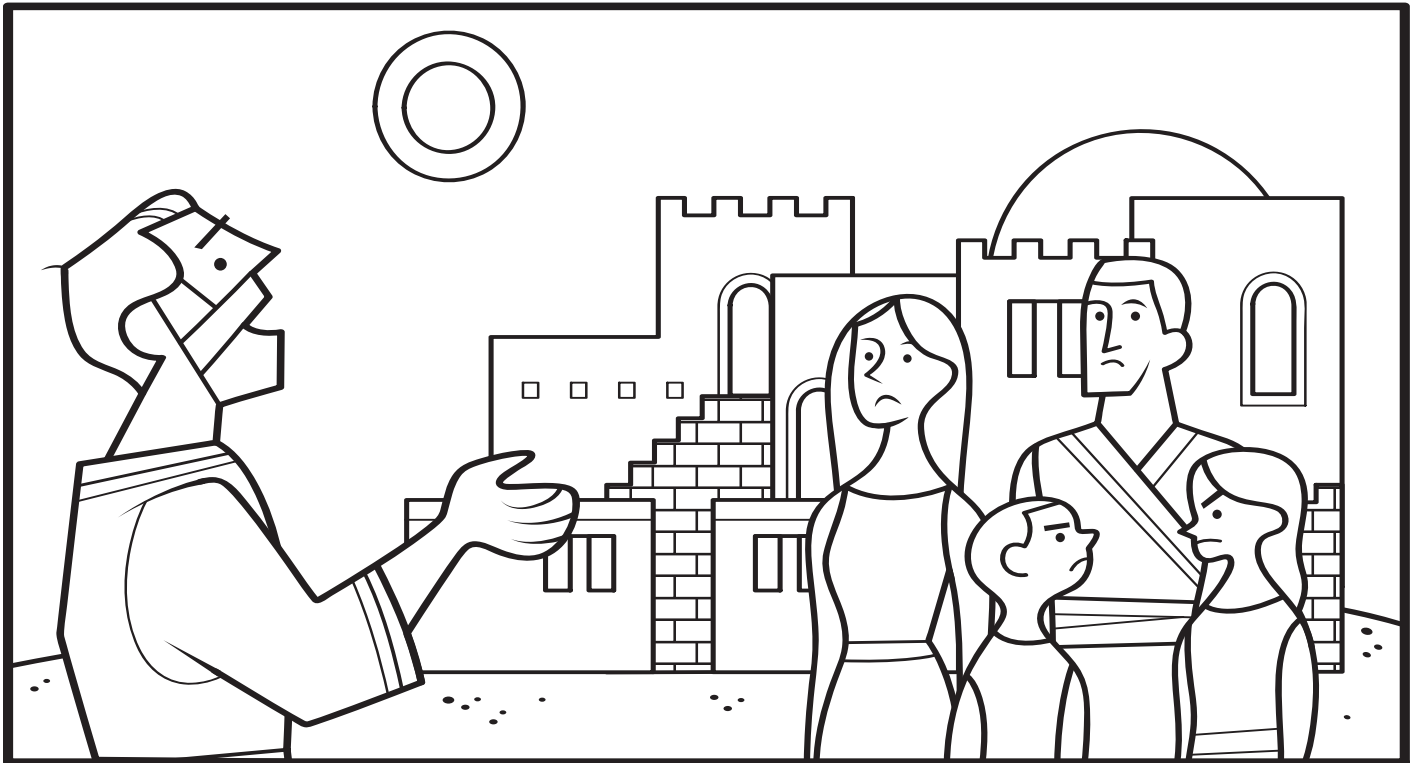


'Ua fa'aue te Atua ia **Enoha** 'ia ha'apī'i i te ta'ata 'ia tātarahapa 'e 'ia bāpetizohia.
'A 'imi 13 ta'a-ē-ra'a 'a tātarahapa ai te ta'ata 'e 'a tāhitihia ai i nī'a i te ra'i.



Mose 7



Nō te aha te Fatu i pī'i ai i tōna nūna'a 'o Ziona ?