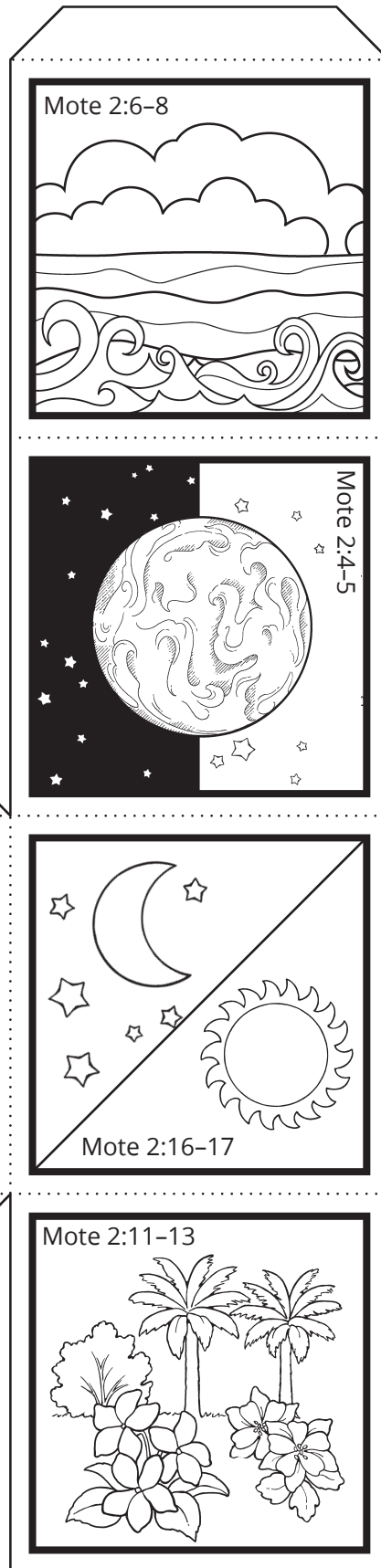
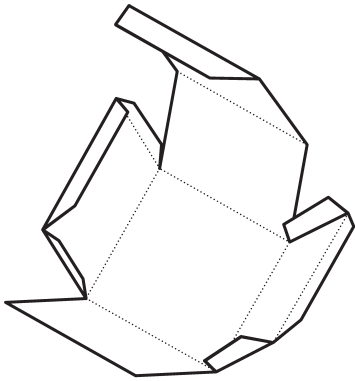


E karika te aonaaba Iesu Kristo (Mote 2).



Karanii tamnei, ao korea te tamnei iaon rain aika toma. Rukuma te tamnei iaon rain aika aki tomatoma, ao kuruni ke teibini beeba ni karaoa te bwaoki. Karenako te bwaoki, ao nooria bwa tamnein tera are e oti mai ieta. Warekii kiibu ni koroboki aika tabu ni kakaea bwa tera riki ae e karaoaki n te bong anne n tain Karikan Bwaai.

