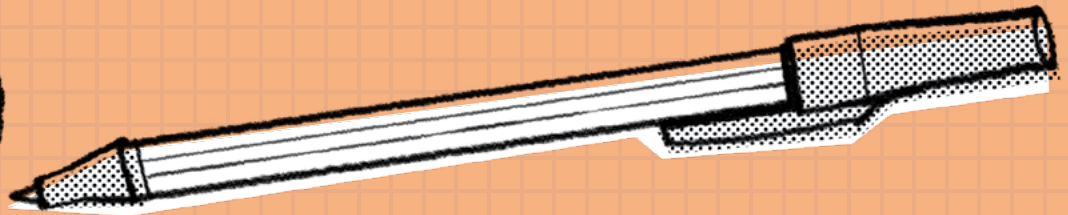


'OKATOPA 2021

# KI'I TOHI KI HE KONIFELENISI LAHÍ



**TE KE LAVA 'O MA'U HA FAKAHĀ  
FAKATAAUTAHA, 'O FAKAFOU  
'I HE KONIFELENISI LAHÍ!**

'Oku 'i heni 'a e ki'i tohí ni ke ke hiki ai ho 'o ngaahi fakakaukaú mo e ongó lolotonga e konifelenisi lahí. 'I ho 'o fakafanongo tokanga 'i he fa' a lotu ki he kau leá, 'e fakamo'oni 'i 'e he Laumālie Mā'oni'oni kau kia Sīsū Kalaisi (vakai, Sione 15:26) mo ako 'i atu kiate koe 'a e "ngaahi me' a kotoa pē 'oku totonu ke mou faí" (2 Nifai 32:3).

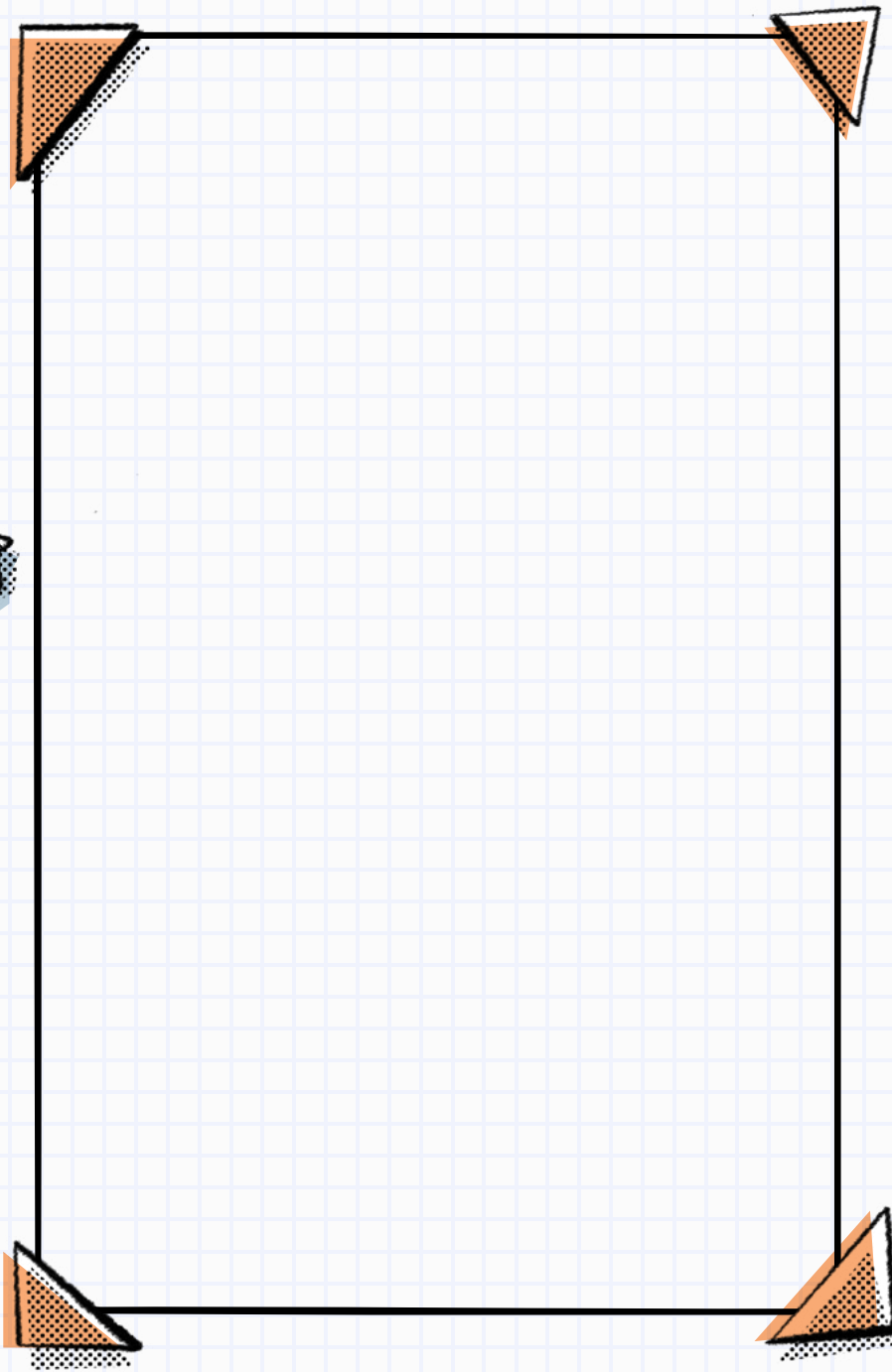
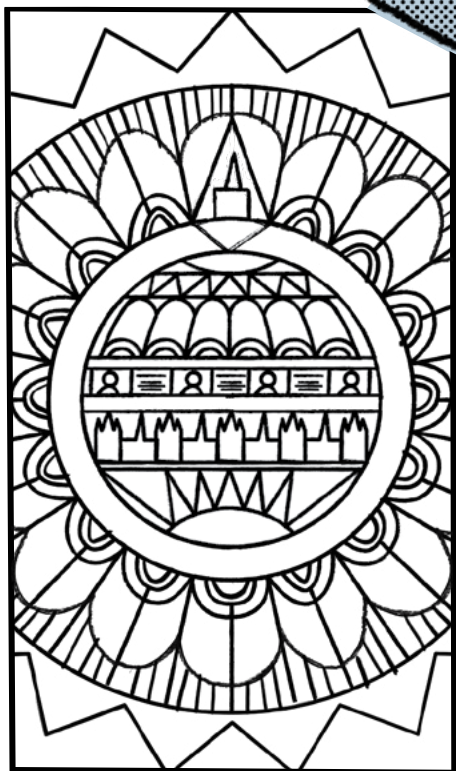
# FAKATAHA 'O E PONGIPONGI Tokonakí

"NA 'E 'IKAI VAHE E NGAAHI  
TEFITÓ KI HE KAU LEÁ. NA 'A NAU  
TAKITAHA LOTUA HA FAKAHĀ  
FAKATAAUTAHA 'I HE TEUTEU 'O  
'ENAU PŌPOAKÍ... 'I HO' OMOU  
AKO KINAUTOLÚ, FEINGA KE  
MOU 'ILO E ME'A 'OKU FEINGA E  
'EIKÍ KE AKO 'I ATU 'O FAKAFOU  
HE 'ENE KAU TAMAIO 'EIKÍ."

Palesiteni Russell M. Nelson<sup>1</sup>

## KUMI PEA 'E MA'U

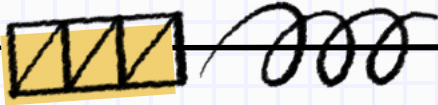
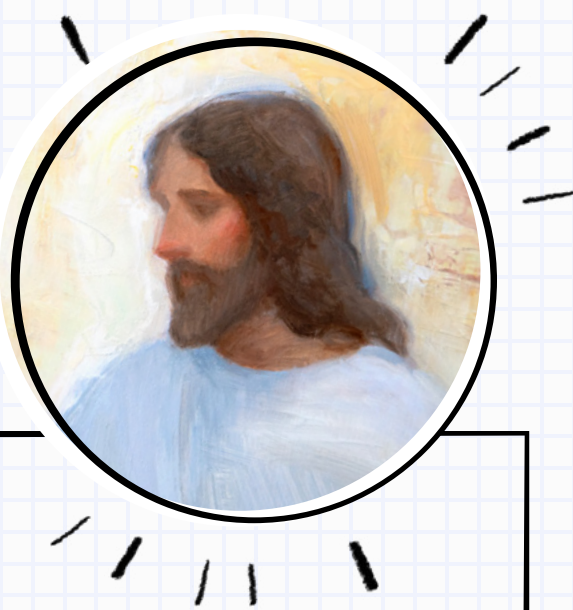
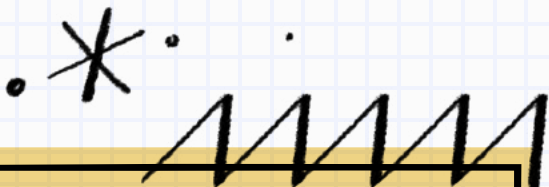
Te ke lava nai 'o ma'u 'a e ngaahi mé'a fufú  
ko 'eni? Tempale 'e 10, folofola 'e 11, pine  
faifekau 'e 3, kau lea 'i he konifelenisi lahi 'e  
toko 4, la'a 'e 2



Ko e hā 'oku ou ongo'i 'oku feinga  
'a e 'Eikí ke ako'i kiate aú?

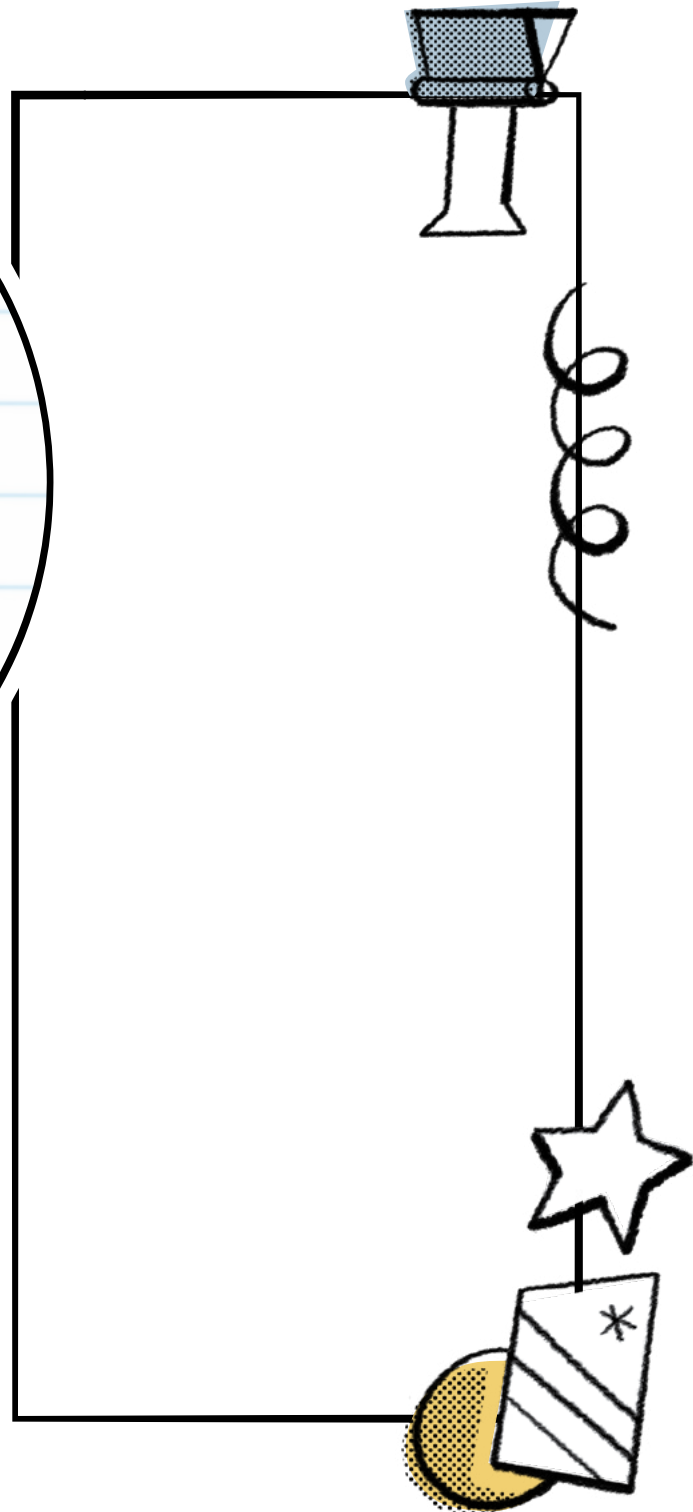
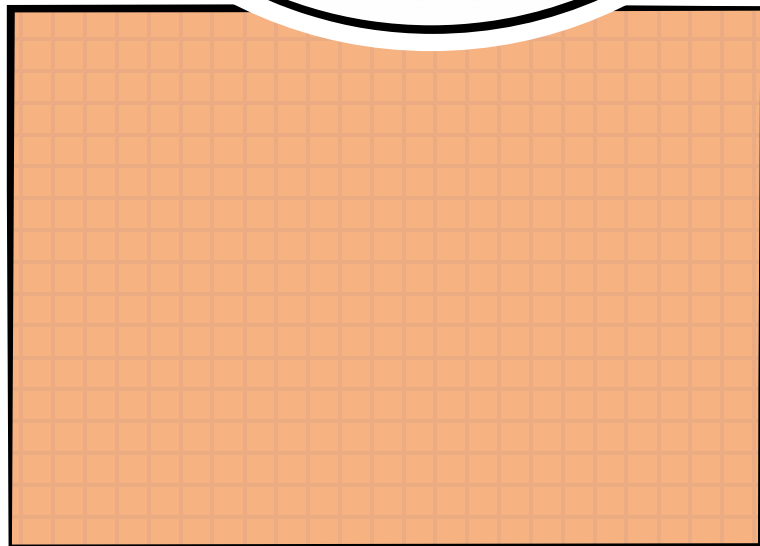
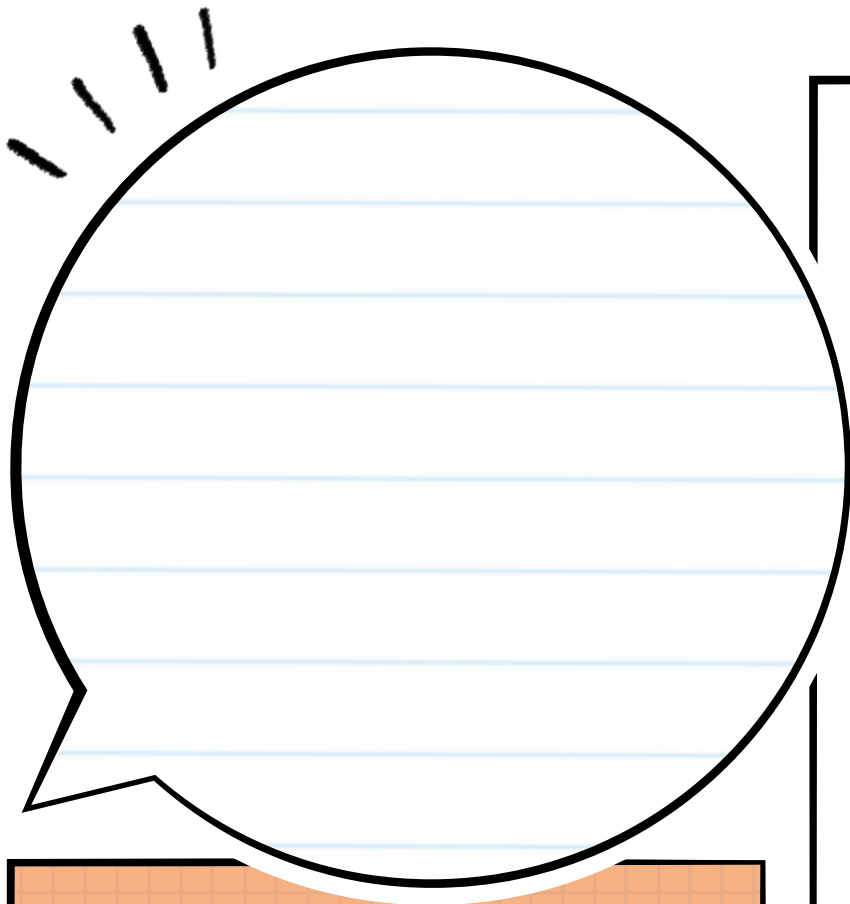
Ko e hā 'a e ngaahi pōpoaki 'oku  
hā mahino ange kiate aú? Ko e hā  
hono 'uhingá?

Ko e hā te u fai he taimi ní? Ko e hā  
'oku fie ma 'u ke u hokohoko atu  
hono fakahokó?



# FAKATAHA 'O E HO'ATĀ

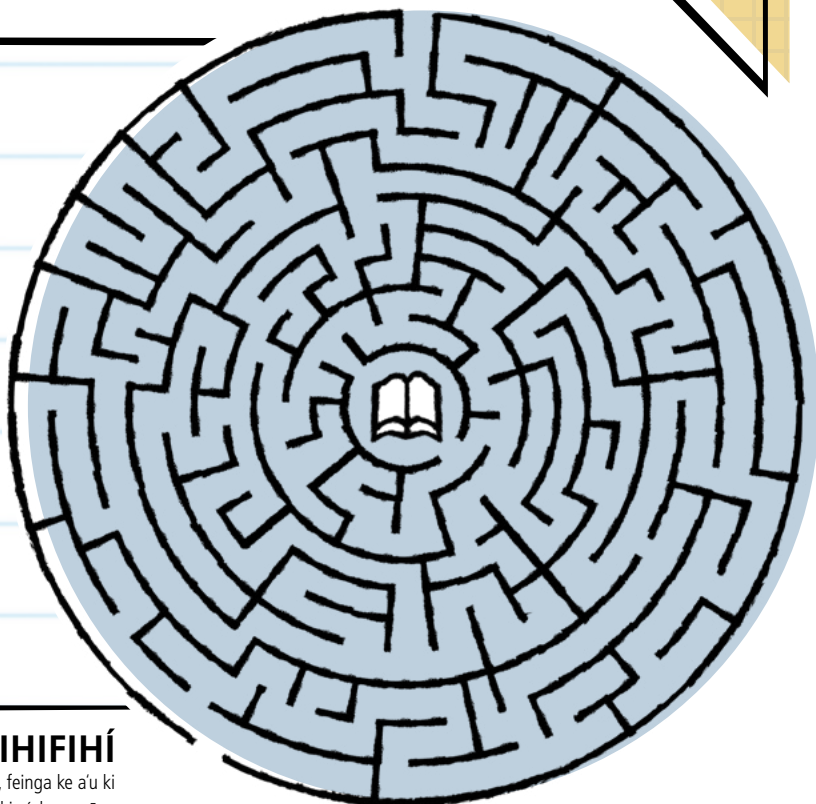
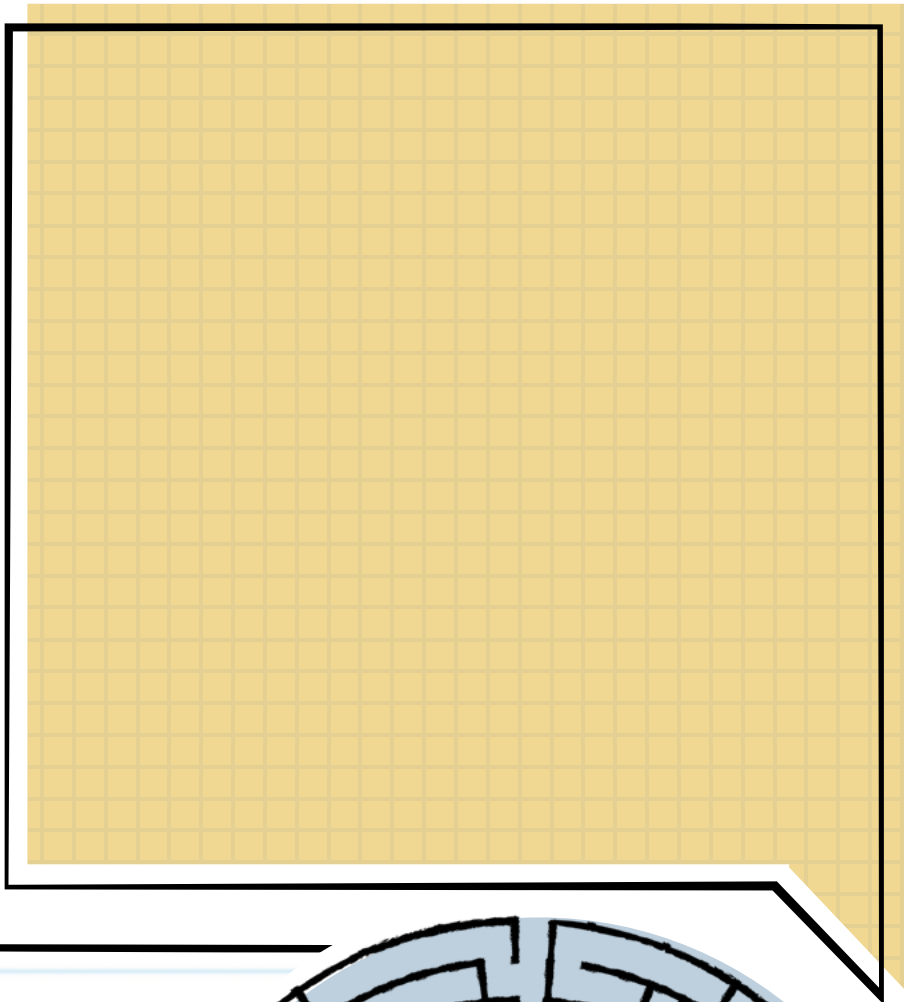
Tokonakí



KO E HĀ 'OKU OU  
ONGO 'I 'OKU FIE  
MA 'U KE U FAI KE U  
TOE OFI ANGE AI KI  
HE FAKAMO'UÍ?

“'OKU OU HOUNGA 'IA HE KUO  
MOU OMI KI HE KONIFELENISI  
[LAHÍ] KE ONGO 'I HA TATAKI  
FAKALAUMĀLIE MEI HE LANGÍ  
PEA MO ONGO 'I OFI ANGE KI  
HE 'ETAU TAMAI HĒVANÍ MO E  
'EIKI KO SISŪ KALAIŚ.”

Palesiteni Henry B. Eyring<sup>2</sup>

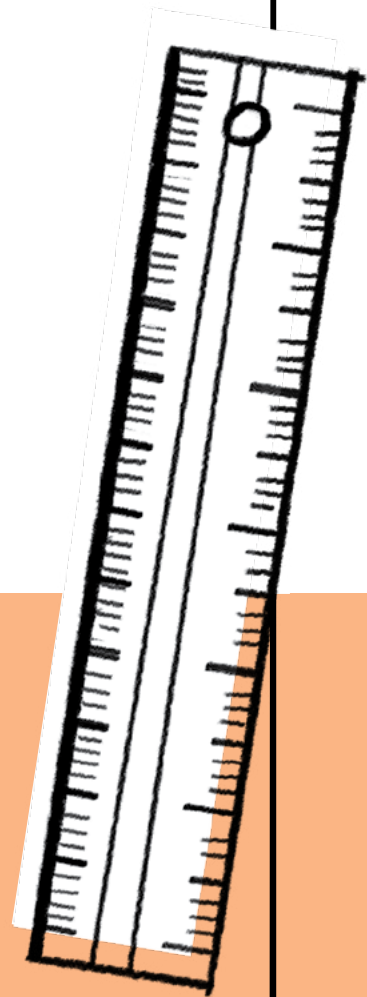


### HALA FIFIFIHÍ

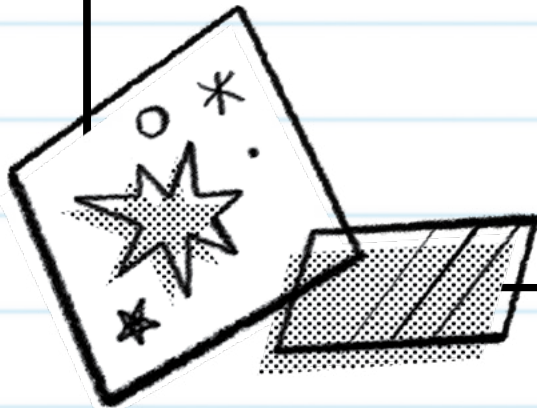
Kamata mei ha fa'ahinga matapā pē 'i he Hala Fihifihí, feinga ke a'u ki he potufolofola 'i lotomālié, pea kumi leva h'ó'o hala foki a'i, kae ngāue 'aki ha matapā kehe! Ko e lao 'e taha: he 'ikai lava ke ke faka'aonga'i tu'o ua ha fo'i hala fihifihí.

“'OKU OU PALŌMESI ATU 'I HO'O FANONGO KI HE  
LE'O 'O E 'EIKÍ KIATE KOE 'I HE NGAahi AKONAKI  
MEI HE KONIFELENISI LAHÍ, PEÁ KE NGĀUE 'I LEVA  
E NGAahi UE 'I KO IÁ, TE KE ONGO 'I E ALA MAI 'A E  
LANGÍ KIATE KOE, PEÁ 'E TĀPUEKINA HO'O MO' UÍ  
MO E MO' UI 'A KINAUTOLU 'OKU MOU FEOHÍ.”

'Eletā Neil L. Andersen<sup>3</sup>



KO E HĀ NA'E FAKAAFE 'I MAI KE U FAI KE  
TOKONI KIATE AU KE U HOKO 'O HANGĒ  
ANGE KO SĪSŪ KALAIŚÍ? TE U FAKAHOKO  
FĒFĒ NAI 'A E FAKAAFE KO IÁ?



llllll





VALIVALI AU!

# FAKATAHA 'O E PONGIPONGI Sāpaté





lllll

NA'Á KU ONGO 'I FĒFĒ 'A E 'OFA  
'A E FAKAMO'UÍ LOLOTONGA  
'A E FAKATAHA KO 'ENI?



"KUO MAU LOTUA, PEA 'OKU MAU FAKAAFE 'I KIMOUTOLU KE MOU LOTU, KE LAHI  
KE 'IATE KITAUTOLU E LAUMĀLIE 'O E 'EIKÍ, KE TAU LAVA 'O FANONGO KI HE NGAHI  
PŌPOAKI KUO TEU 'E HE FAKAMO'UÍ MA 'AMOUTOLÚ—KO E NGAHI PŌPOAKI  
TE NAU 'OMI 'A E NONGA KI HOMOU LAUMĀLIÉ."

Palesiteni Russell M. Nelson<sup>4</sup>

# FAKATAHA 'O E HO'ATĀ Sāpaté

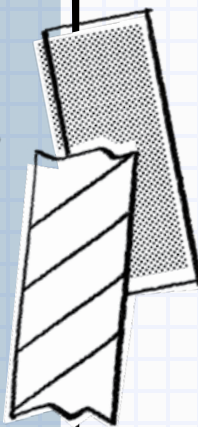


"KAPAU TE MAU AKONAKI 'I  
HE LAUMĀLIÉ PEĀ KE FAKAFA-  
NONGO MAI 'I HE LAUMĀLIÉ,  
'E TOKONI ATU HAMAU NI 'IHI KI  
HE TŪKUNGA 'OKÚ KE 'I AÍ, 'O  
'OATU FAKAHANGATONU KIATE  
KOE HA PŌPOAKI FAKAEPALŌ-  
FITA FAKATAAUTAHA."

Eletā Jeffrey R. Holland<sup>5</sup>



**KO E HĀ HA NGA AHI ONGO FAKALAUMĀLIE  
KUÓ U MA 'U? KO E HĀ 'A E ME 'A 'OKU  
MAHU 'INGA TAHA KIATE AU HE TAIMI NÍ?**

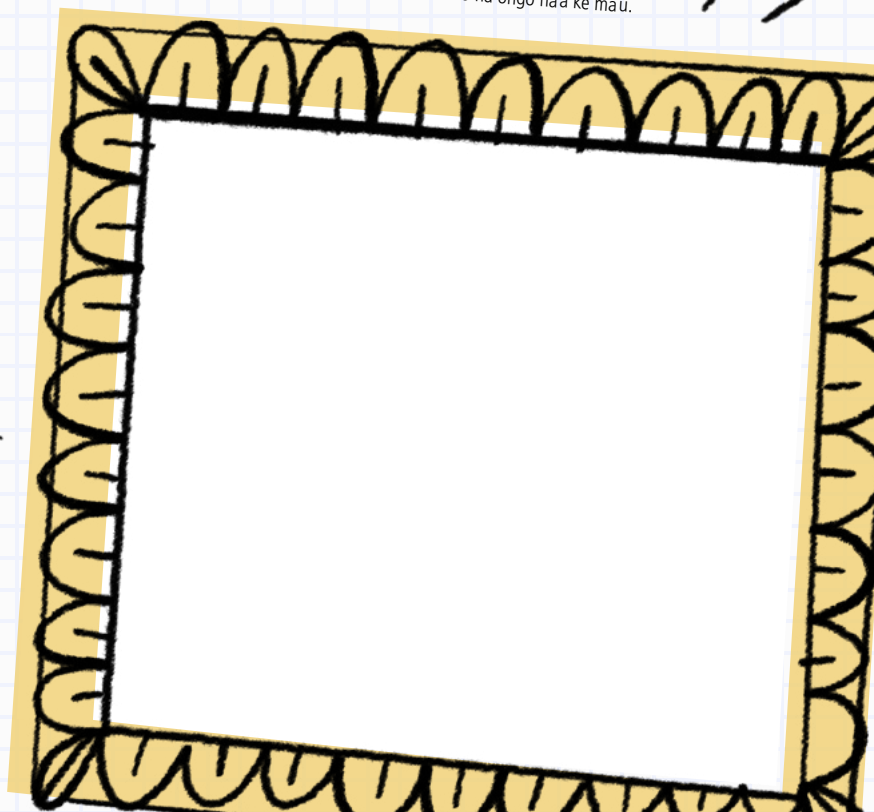


## **TA FAKATĀTĀ**

Tā heni 'a e momeniti na'á ke sai'ia taha ai mei he konifelenisi! 'E lava pē ko ha tokotaha lea, ko ha talanoa, na'a mo ha ongo na'á ke ma'u.

### **NGAAHI MA'U'ANGA FAKAMATALÁ**

1. Russell M. Nelson, "Lea Tukú," konifelenisi lahi 'o 'Epeleli 2019 (*Ensign* pe *Liahona*, Mē 2019, 111).
2. Henry B. Eyring, "Ko e Potu ko ia 'Oku Fakataha ai 'a e Toko Ua pe Toko Tolú," konifelenisi lahi 'o 'Epeleli 2016 (*Ensign* pe *Liahona*, Mē 2016, 19).
3. Neil L. Andersen, konifelenisi lahi 'o 'Okatopa 2017 (*Ensign* pe *Liahona*, Nōvema 2017, 126).
4. Russell M. Nelson, "Pōpoaki Kamatā," konifelenisi lahi 'o 'Epeleli 2020 (*Ensign* pe *Liahona*, Mē 2020, 7).
5. Jeffrey R. Holland, konifelenisi lahi 'o 'Epeleli 2011 (*Ensign* pe *Liahona*, Mē 2011, 113).
6. Neil L. Andersen, konifelenisi lahi 'o 'Okatopa 2017 (*Ensign* pe *Liahona*, Nōvema 2017, 125).





## UE'I FAKALAUMĀLIE MA'AU

“'OKU 'I AI HA FAKAHINOHINO FAKALANGI LAHI FAU 'OKU  
FAKATATALI MAI KE MOU MA 'U MEI HE NGAahi PŌPOAKI  
'O E KONIFELENISI LAHI. 'OKU SIVI 'I KITAUTOLU MEI HE ANGA  
'ETAU FAKAFEANGAI KI HE NGAahi ME 'A 'OKU TAU  
FANONGOA, LAUTOHI MO ONGO' Í.

'Eletā Neil L. Andersen<sup>6</sup>

### FIE MA'U HA TATAU LAHI ANGE?

Download pea paaki 'a e kīi tohi ko 'enī 'i he  
[conference.ChurchofJesusChrist.org](https://conference.ChurchofJesusChrist.org).

© 2021 'e he Intellectual Reserve, Inc. Ma'u 'a e ngaahi totonu fakalao kotoa pē.

'Oku foaki 'a e ngofua ke toe paaki 'a e kīi tohi ko 'enī ke faka'aonga'i fakataautaha  
pea 'ikai fakakomēsiale. 'Oku kau heni 'a e ngofua ki he kau taki fakauōtī ke nau  
paaki ha tatau 'o fakafé'unga ki he nīihi 'oku nau ngāue ki ai 'i honau uuii'i. Kuo pau  
ke paaki kakato 'a e fanga kīi tohi. 'Oku 'ikai kau heni 'a e ngofua ke vahevahe 'i he  
'initaneti, toe faka'uhinga'i kehe pe tufaki 'a e naunau ko 'enī. 'Oku fie ma'u ha ngofua  
ki hano faka'aonga'i 'a e naunau ko 'enī ki ha toe 'uhinga kehe.

[permissions.ChurchofJesusChrist.org](https://permissions.ChurchofJesusChrist.org)

