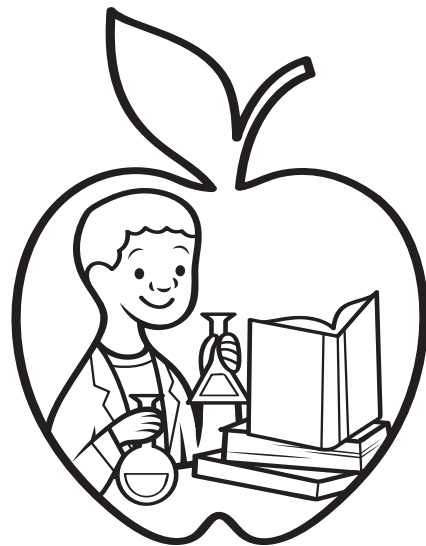
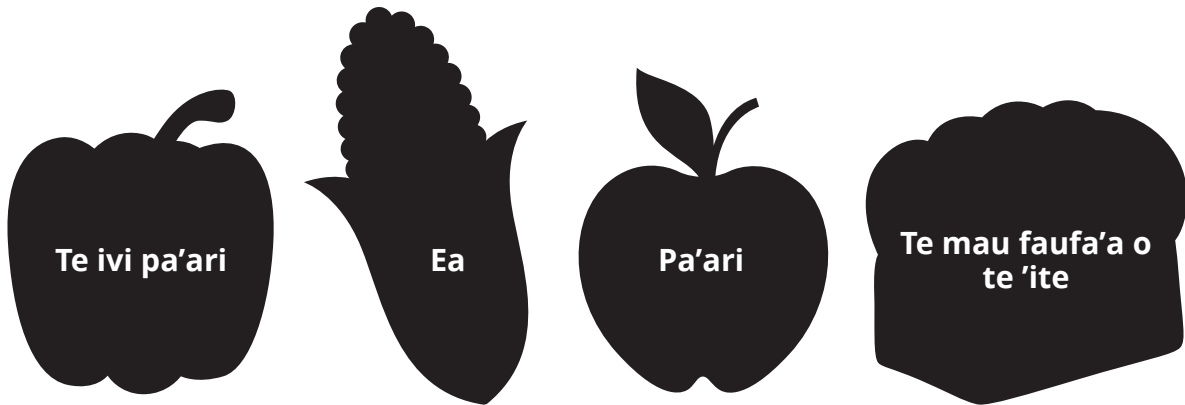


I roto i te **parau pa'ari**, 'ua ha'api'i mai te Fatu ē, e 'amu tātou i te mau mā'a maita'i 'e e fa'aātea ho'i i te mau mea e nehenehe e ha'amāuiui i tō tātou tino. Fa'atū'ati i te mau ha'amaita'ira'a tā te Fatu i fafau mai i te feiā e ha'apa'o i te parau pa'ari.



Te Parau Ha'api'ira'a 'e te mau Parau Fafau 89



E aha tā te Fatu i fafau mai i te feiā 'o te fa'atura (ha'apa'o) i te Parau pa'ari ?