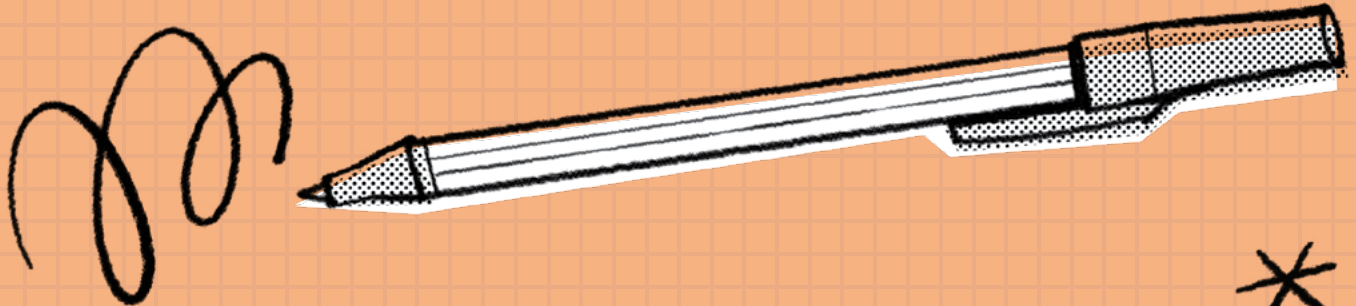


OKETOPA 2021

# TUSIGAMANATU O LE KONAFESI AOA



**E MAFAI AI ONA E MAUA FAAALIGA FAALETAGATA  
LAVA IA, E ALA I KONAFESI AOA!**

O leni api o faamatalaga e mo oe e tusi ai i lalo ou mafaufauga ma lagona i le taimi o le konafesi aoao. A o e tatalo ma faalogo ma le naunautai i failauga, o le a molimau atu le Agaga Paia ia Iesu Keriso (tagai i le Ioane 15:26) ma aoao oe i “mea uma e tatau ona outou faia” (2 Nifae 32:3).

# Aso Toonai

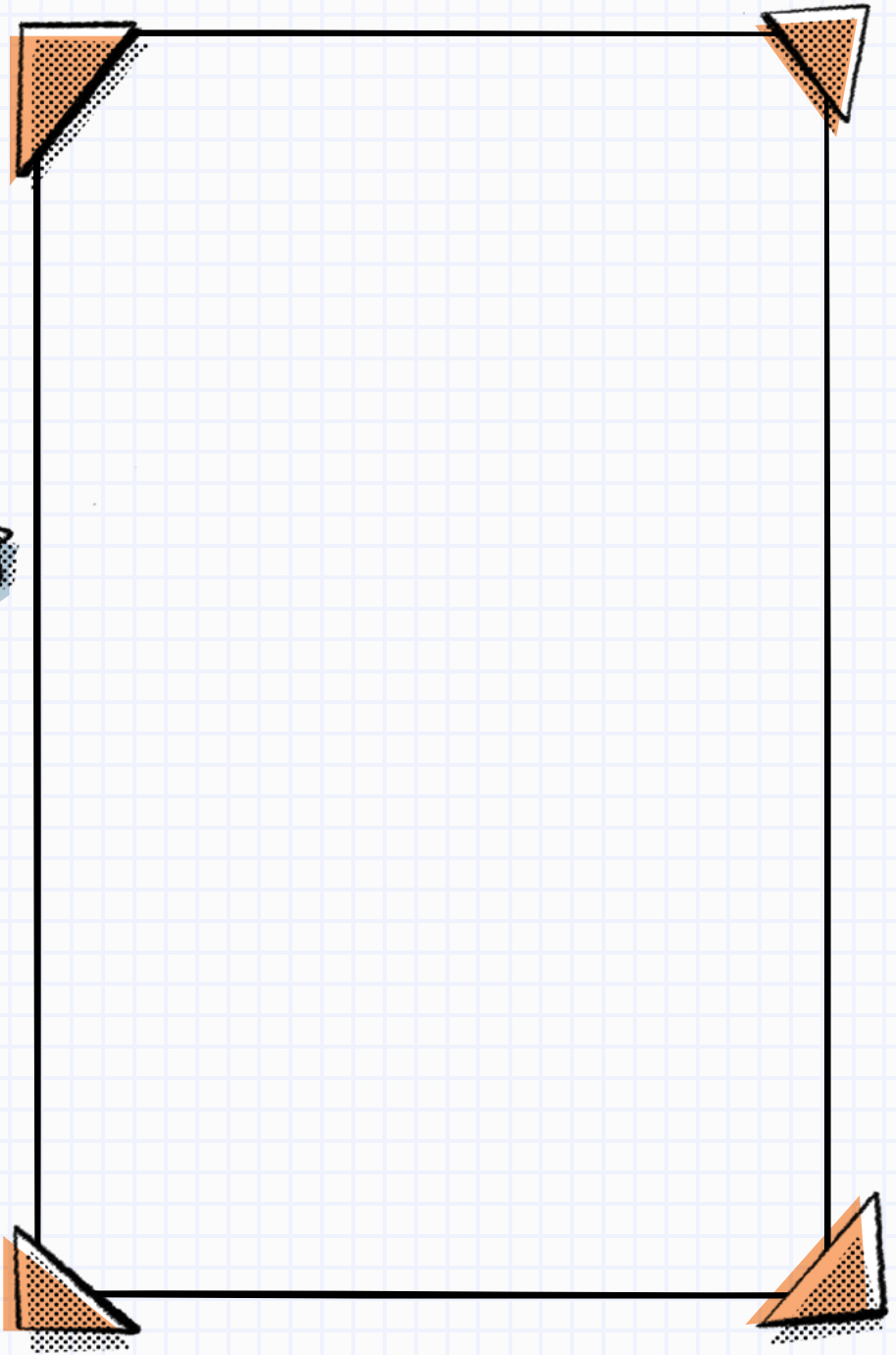
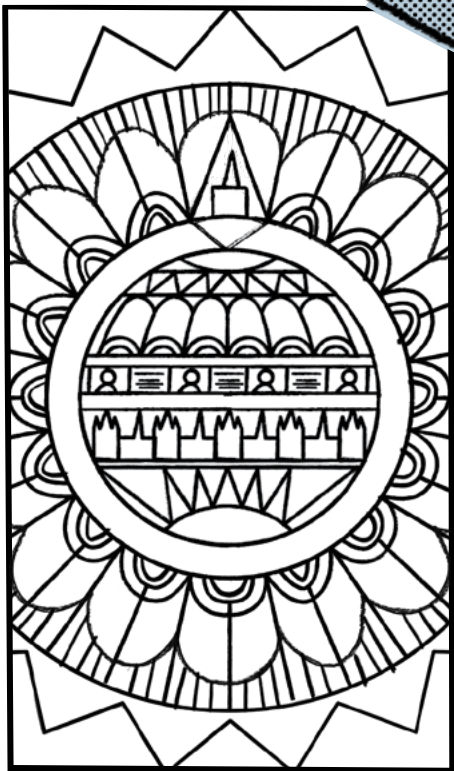
## SAUNIGA O LE TAEAO

'E LE'I ATOFAINA NI AUTU I  
FAILAUGA. SA TATALO I LATOU  
TAITOATASI MO FAAALIGA  
FAALETAGATA LAVA IA I LE  
SAUNIAINA O A LATOU SAVALI.  
... AO E SUESUEINA [IA SAVALI],  
SAILI ATU E AOA O MEA O LOO  
TAUMAFAI LE ALII E AOA ATU  
IA TE OE E AUALA ATU I ANA  
AUAUNA."

Peresitene Russell M. Nelson<sup>1</sup>

### SAILI MA MAUA

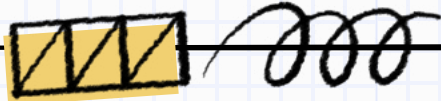
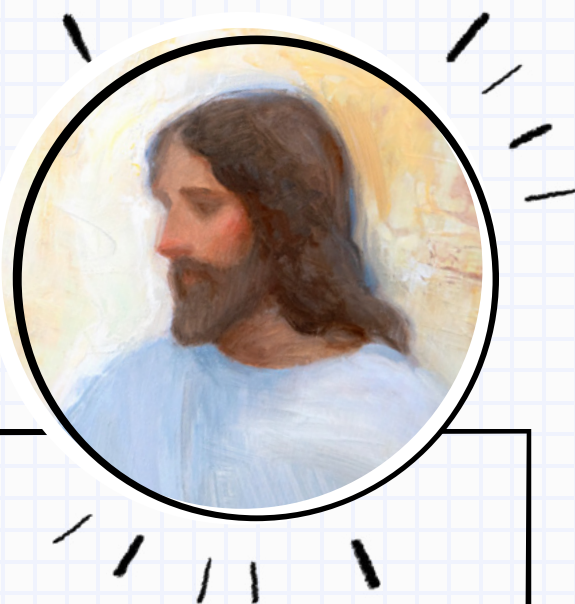
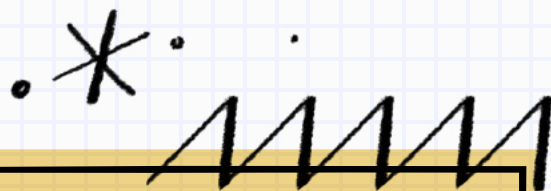
E mafai ona e mauaina nei mea faitino o loo  
natia? 10 malumalu, 11 tusitusiga paia, 3 pine  
faifeautal'ai, 4 failauga o le konafesi aoao, 2 la



O le a se mea ou te lagonaina o  
loo taumafai le Alii e aoao mai ia  
te au?

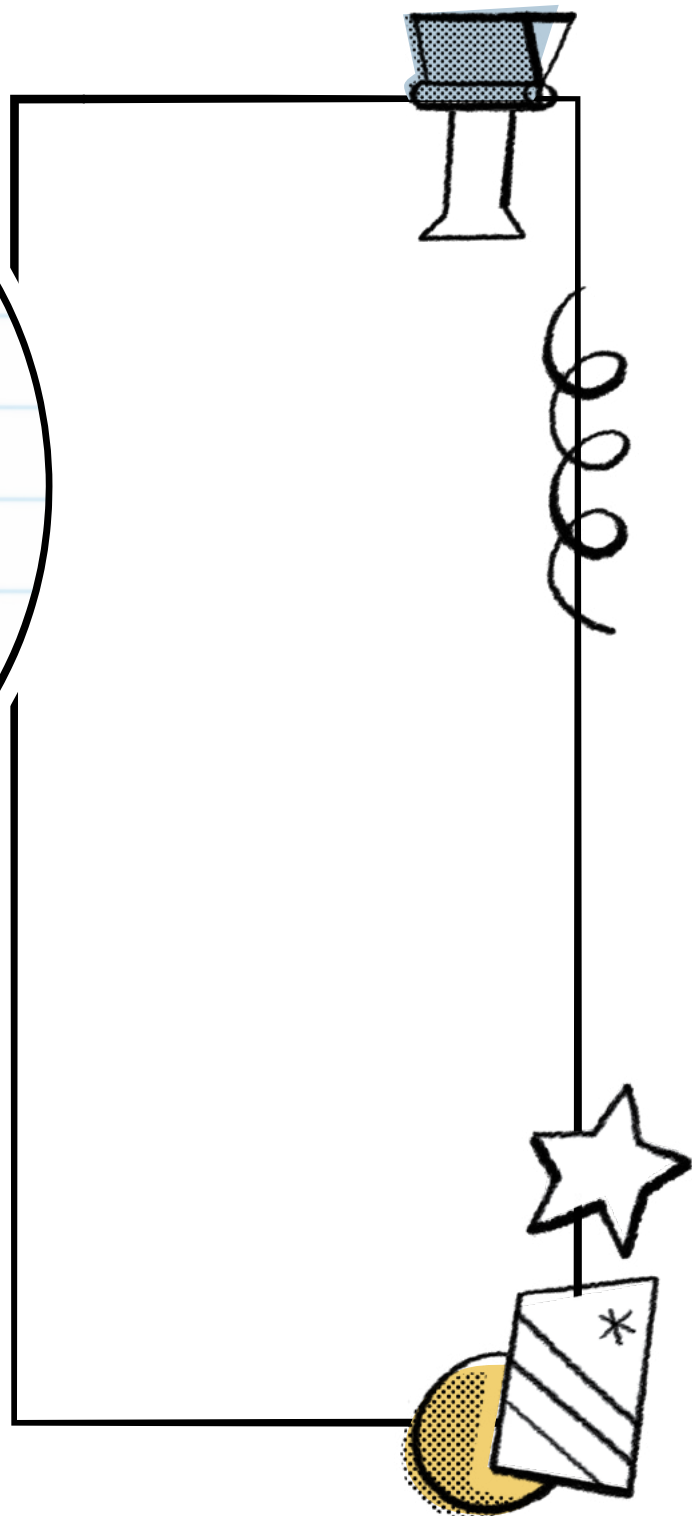
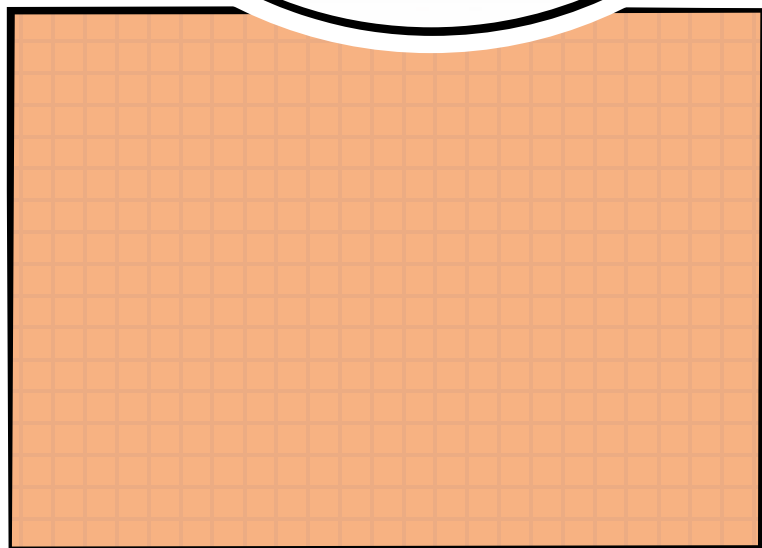
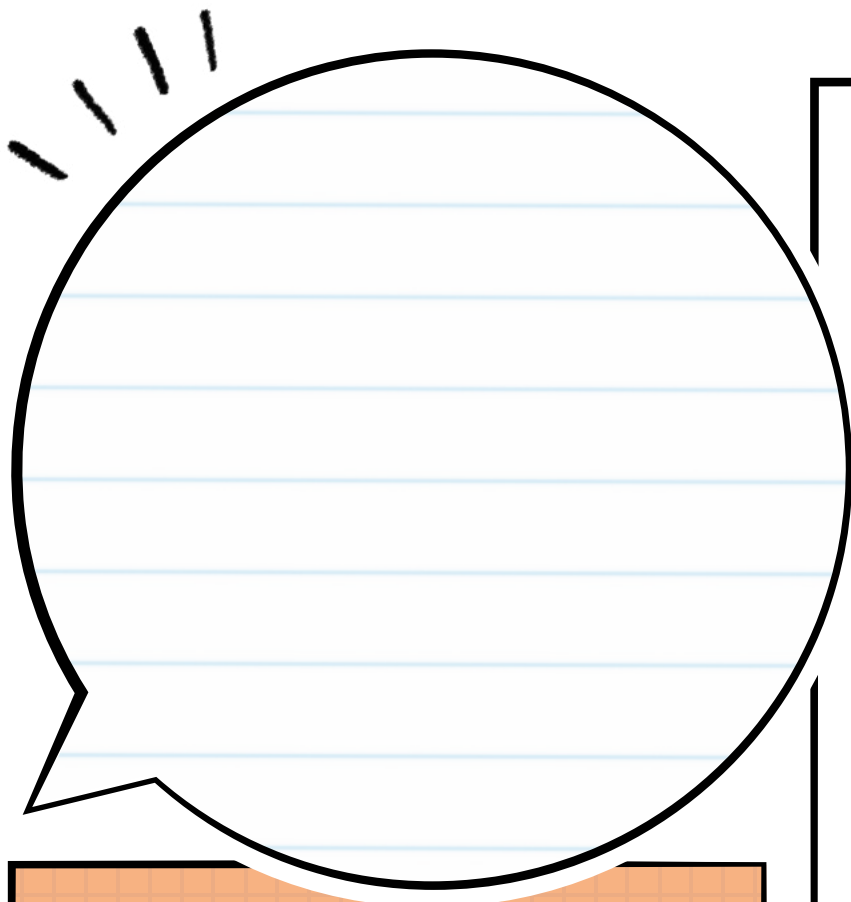
O a savali na tulagaese ia te au?  
Aisea?

O le a se mea o le a ou faia nei?  
O le a se mea e tatau ona ou  
faaauau ona faia?



# Aso Toonai

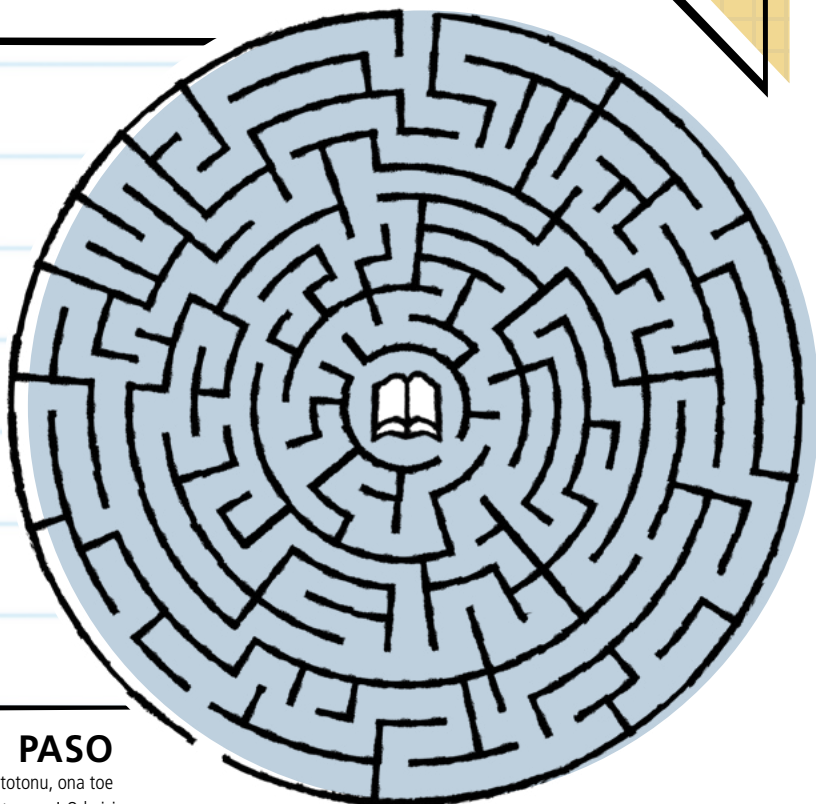
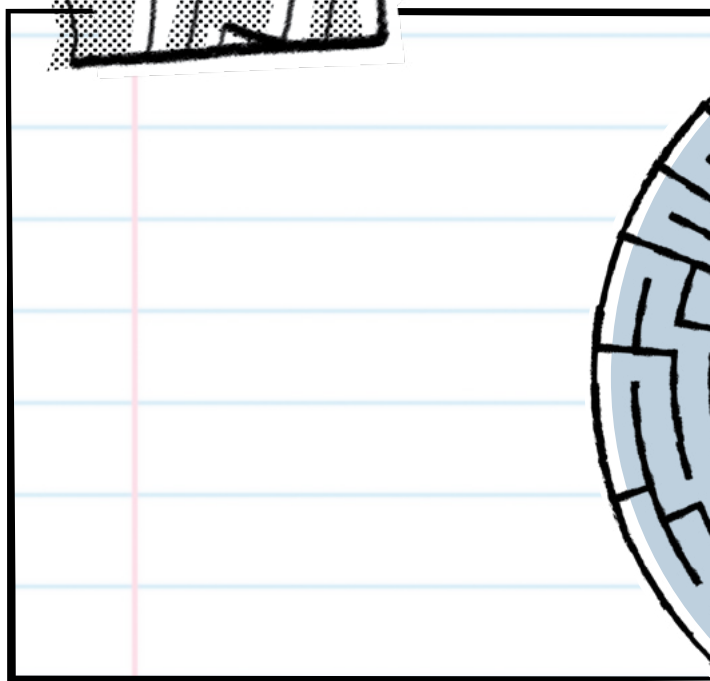
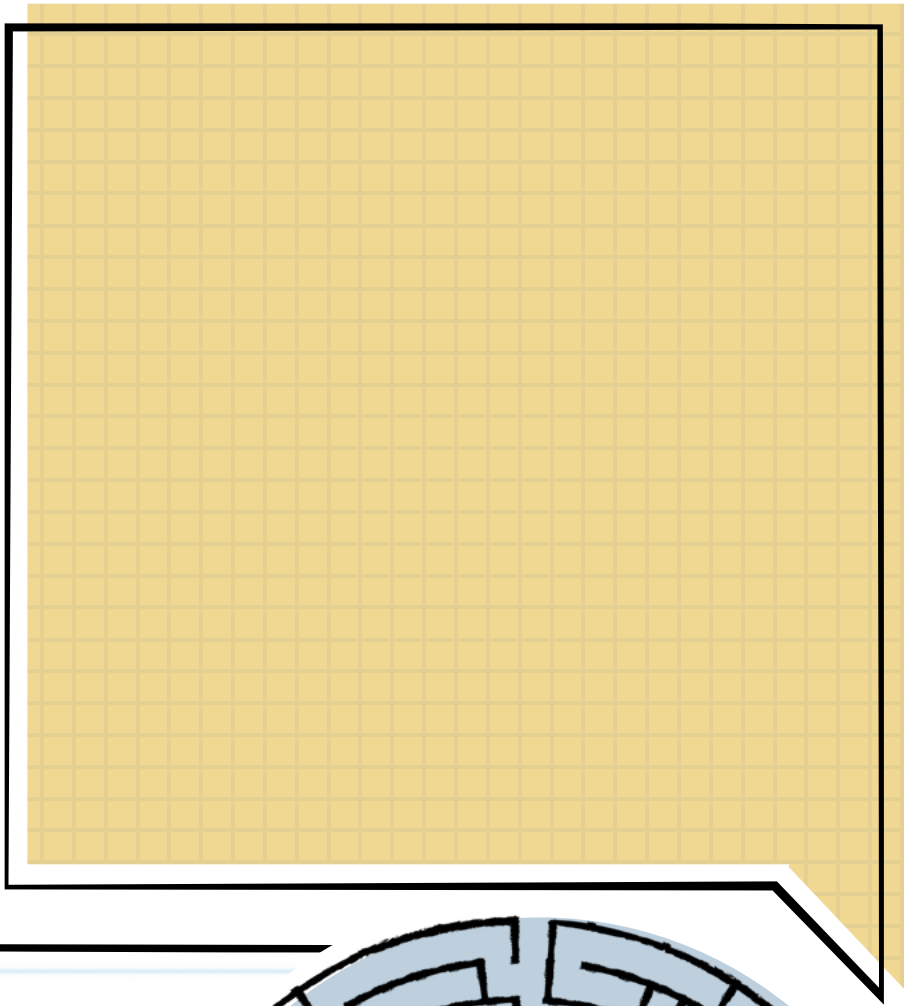
## SAUNIGA O LE AOAULI



**O LE A SE MEA  
OU TE LAGONA E  
MANAOMIA ONA  
OU FAIA E FAALATA-  
LATA ATILI ATU AI I  
LE FAAOLA?**

“OU TE FAAFETAI UA OUTOU O  
MAI I LE KONAFESI [AOAO] IA  
LAGONAINA MUSUMUSUGA  
MAI LE LAGI MA IA LAGONA LE  
LATALATA ATILI ATU I LO TATOU  
TAMA FAALELAGI MA LE ALII O  
IESU KERISO.”

Peresitene Henry B. Eyring?

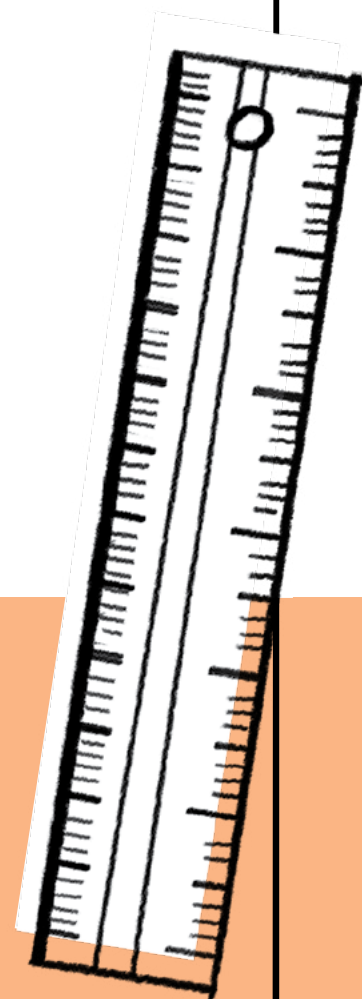


### **PASO**

Amata mai soo se faitotoa o le paso, ia oo atu i tusitusiga paia i le ogatotonu, ona toe sue lea o lou auala e toe foi mai ai, ae o le taimi lenei e ala i se faitotoa ese! O le isi tulafono e tasi: e le mafai ona e faaaogaina faalua soo se aualasavali o le paso.

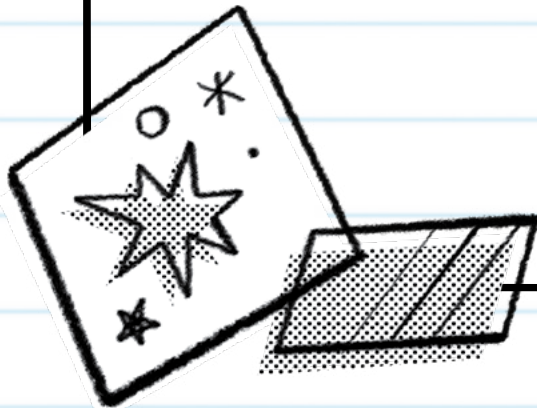
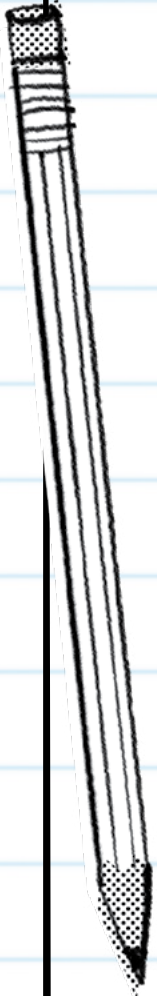
**"OU TE FOLAFOLA ATU IA TE OE A O E FAAFOFOGA I  
LE SIUFOFOGA O LE ALII IA TE OE I AOAOGA O LENEI  
KONAFESI AOA, ONA FAATINO LEA O NA UUNAIGA, O  
LE A E LAGONAINA LE AAO O LE LAGI I OU LUGA, MA O  
LE A FAAMANUIAINA AI LOU OLAGA MA OLAGA O ISI O  
LOO SIOMIAINA OE.**

Elder Neil L. Andersen<sup>3</sup>





**O LE A SE MEA NA VALAAULIA AU E FAI  
O LE A FESOASOANI IA TE AU E AVEA  
ATILI AI E FAAPEI O IESU KERISO?  
O LE A FAAPEFEA ONA OU FAATINOINA  
LENA VALAAULIA?**



*llllll*





VALIVALI AU!

# Aso Sa **SAUNIGA O LE TAEAO**





*lllll*

**NA FAAPEFEA ONA OU LAGONAINA LE ALOFA  
O LE FAAOLA I LE TAIMI O LENEI SAUNIGA?**



**“SA MATOU TATALO, MA VALAAULIA OUTOU IA TATALO, INA IA FAATASI MAI LE AGAGA O  
LE ALII MA I TATOU I SE FAATELEGA NA’UA E MAFAI AI ONA E FAALOGO I SAVALI UA I AI I LE  
FAAOLA E FAAPITOA MO OE—SAVALI O LE A AUMAIA LE FILEMU I LOU AGAGA.”**

Peresitene Russell M. Nelson<sup>4</sup>



Aso Sa

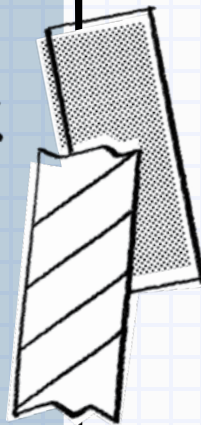
# SAUNIGA O LE AFIAFI

'AFAI MATOU TE AOA O ATU I LE  
AGAGA MA OUTOU FAALOGO I LE  
AGAGA, O NISI O I MATOU O LE A  
PAI ATU I LOU TAGATA, MA AUINA  
ATU SE SAVALI FAAPEROFETA  
PATINO E FAAPITOA LAVA MO OE".

Elder Jeffrey R. Holland<sup>5</sup>



**O A NI UUNAIGA FAALEAGAGA UA OU  
MAUAINA? O LĒ FEA E SILI ONA TAUA  
MO AU I LE TAIMI NEI?**

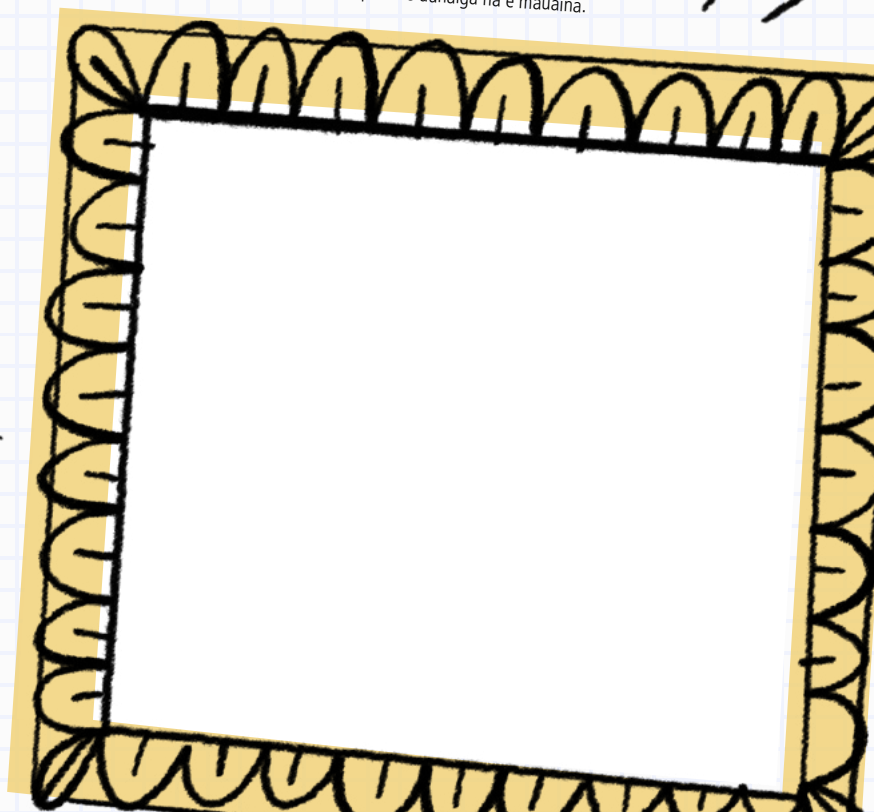


## **ATA TUSI**

Tusi le taimi e te fiafia ai mai le konafesi iinei! E mafai ona ave'a o se failauga, se tala, po o se uunaiga na e mauaina.

### **FAAMATALAGA**

1. Russell M. Nelson, "Tuleiga Faai'u," konafesi aoao o Ape. 2019 (*Ensign* po o le *Liahona*, Me 2019, 111).
2. Henry B. Eyring, "O le Mea ua Faapotopoto ai se Toalua po o se Toatolu," konafesi aoao ia Ape. 2016 (*Ensign* po o le *Liahona*, Me 2016, 19).
3. Neil L. Andersen, konafesi aoao Oke. 2017 (*Ensign* po o le *Liahona*, Nov 2017, 126).
4. Russell M. Nelson, "Tuleiga Amata," konafesi aoao Ape. 2020 (*Ensign* po o le *Liahona*, Me 2020, 6).
5. Jeffrey R. Holland, konafesi aoao Ape. 2011 (*Ensign* po o le *Liahona*, Me. 2011, 113).
6. Neil L. Andersen, konafesi aoao Oke. 2017 (*Ensign* po o le *Liahona*, Nov. 2017, 125).





## UUNAIGA MO OE

"O LOO I AI SE PUSA O OA O TAITAIGA FAALELAGI O LOO  
FAATALITALI MO LOU MAUAINA I SAVALI O LE KONAFESI AOA. O  
LE SUEGA LA MO I TATOU TAITOATASI O LE AUALA TATOU TE TALI  
ATU AI I MEA TATOU TE FAALOGO I AI, O MEA TATOU TE FAITAU I AI,  
MA MEA TATOU TE LAGONAINA."

Elder Neil L. Andersen<sup>6</sup>

---

### MANAOMIA NISI KOPI?

Sii mai ma lolomi le tusigamanatu leni i le  
[conference.ChurchofJesusChrist.org](https://www.conference.ChurchofJesusChrist.org).

© 2021 Puletaofia e le Intellectual Reserve, Inc. Ua taofia aia tatau uma.

Ua tuuina atu le faatagaga e toe lolomiina ai leni tamaitusi mo le faaaogaina e le tagata lava ia, ae le faapisinisi. E aofia i leni mea le faatagaga mo taitai o le uarota e lolomi ai se aofaiga laitiiti o kopi mo i latou o loo latou auauna atu i ai i le tulaga lautele o o latou valaauga. E tatau ona lolomiina atoa le tamaitusi. E le o aofia ai i leni mea le faatagaga e tuu ai i luga o le initoneti, fetuunai, pe tufatufa atu leni anomea. Soo se faaaogaina faapoopoo o leni anomea e manaomia ai se faatagaga.

[permissions.ChurchofJesusChrist.org](https://www.permissions.ChurchofJesusChrist.org)

