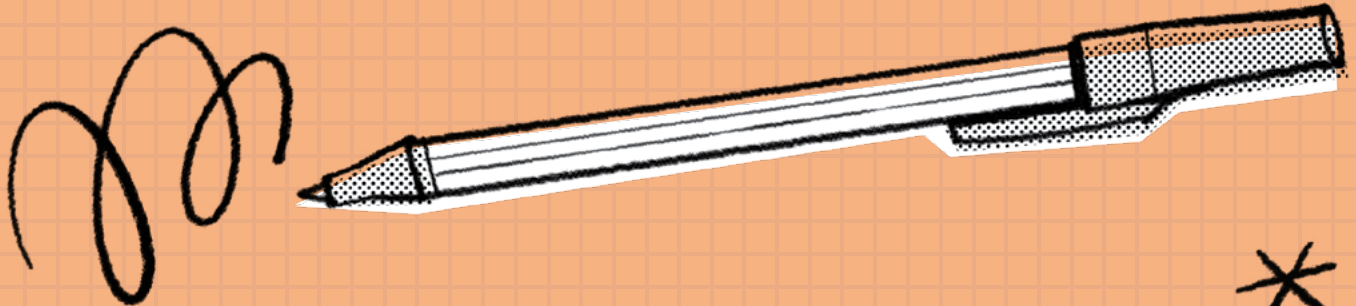


OKETOPA 2021

TUSIGAMANATU O LE KONAFESI AOA



**E MAFAI AI ONA E MAUA FAAALIGA FAALETAGATA
LAVA IA, E ALA I KONAFESI AOA!**

O leni api o faamatalaga e mo oe e tusi ai i lalo ou mafaufauga ma lagona i le taimi o le konafesi aoao. A o e tatalo ma faalogo ma le naunautai i failauga, o le a molimau atu le Agaga Paia ia Iesu Keriso (tagai i le Ioane 15:26) ma aoao oe i “mea uma e tatau ona outou faia” (2 Nifae 32:3).

Aso Toonai

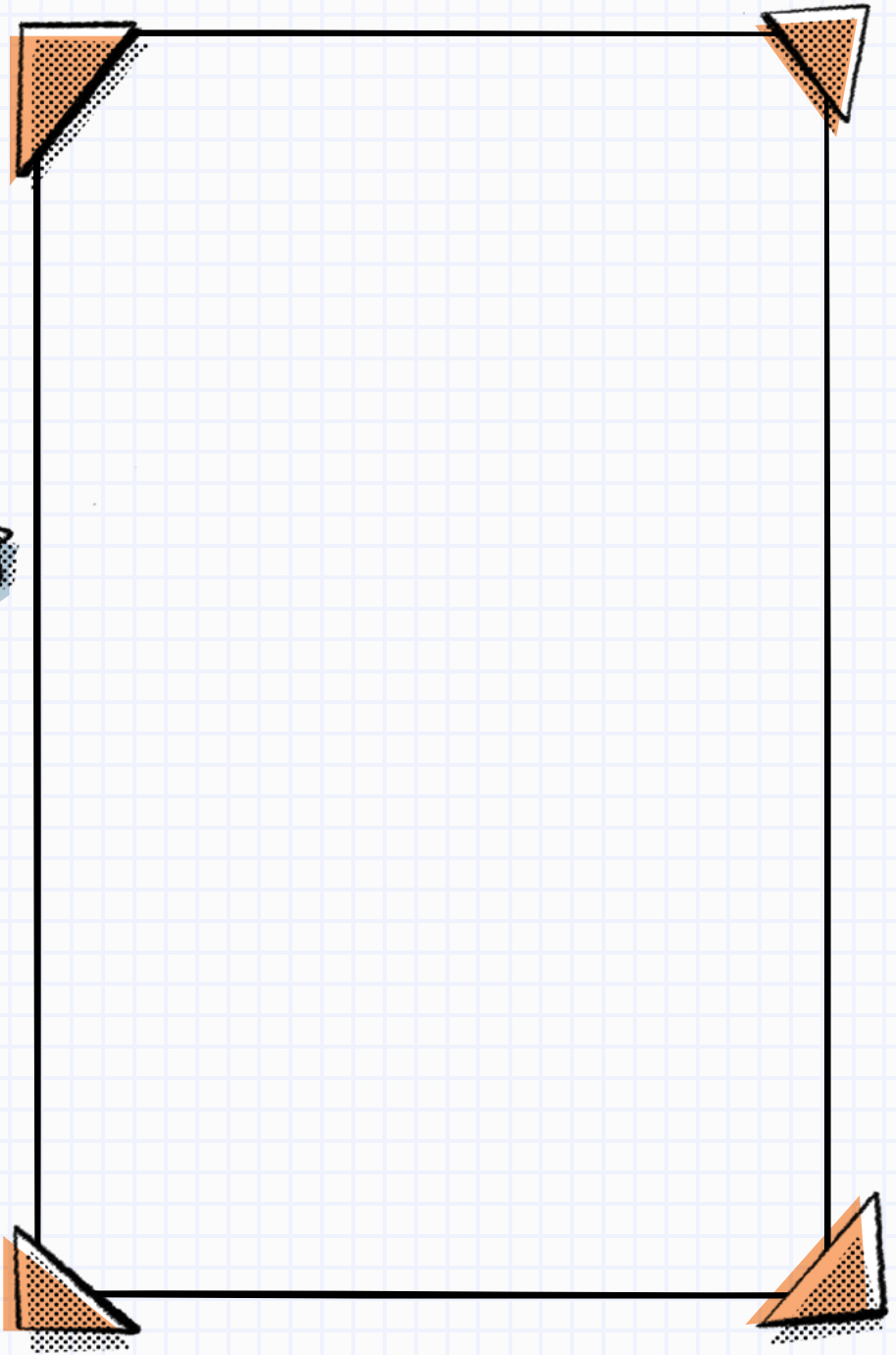
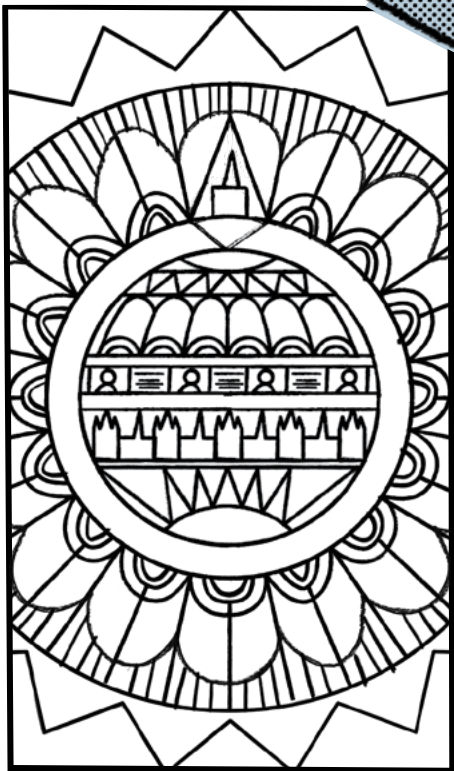
SAUNIGA O LE TAEAO

'E LE'I ATOFAINA NI AUTU I FAILAUGA. SA TATALO I LATOU TAITOATASI MO FAAALIGA FAALETAGATA LAVA IA I LE SAUNIAINA O A LATOU SAVALI. ... AO E SUESUEINA [IA SAVALI], SAILI ATU E AOA O MEA O LOO TAUMAFAI LE ALII E AOA ATU IA TE OE E AUALA ATU I ANA AUAUNA."

Peresitene Russell M. Nelson¹

SAILI MA MAUA

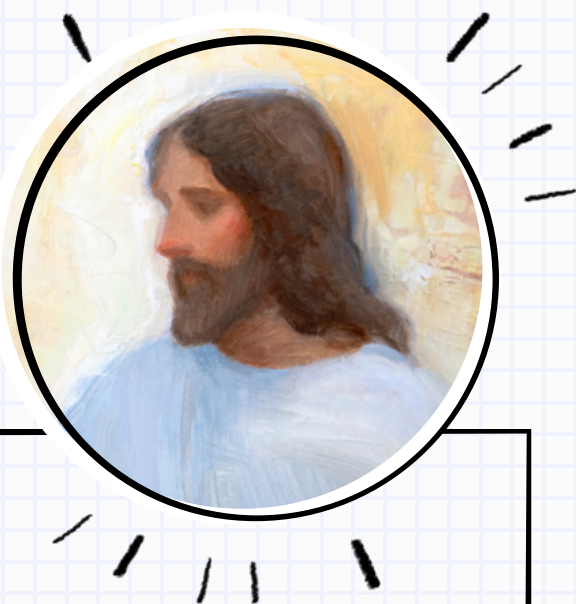
E mafai ona e mauaina nei mea faitino o loo natia? 10 malumalu, 11 tusitusiga paia, 3 pine faifeautalai, 4 failauga o le konafesi aoao, 2 la



O le a se mea ou te lagonaina o
loo taumafai le Alii e aoao mai ia
te au?

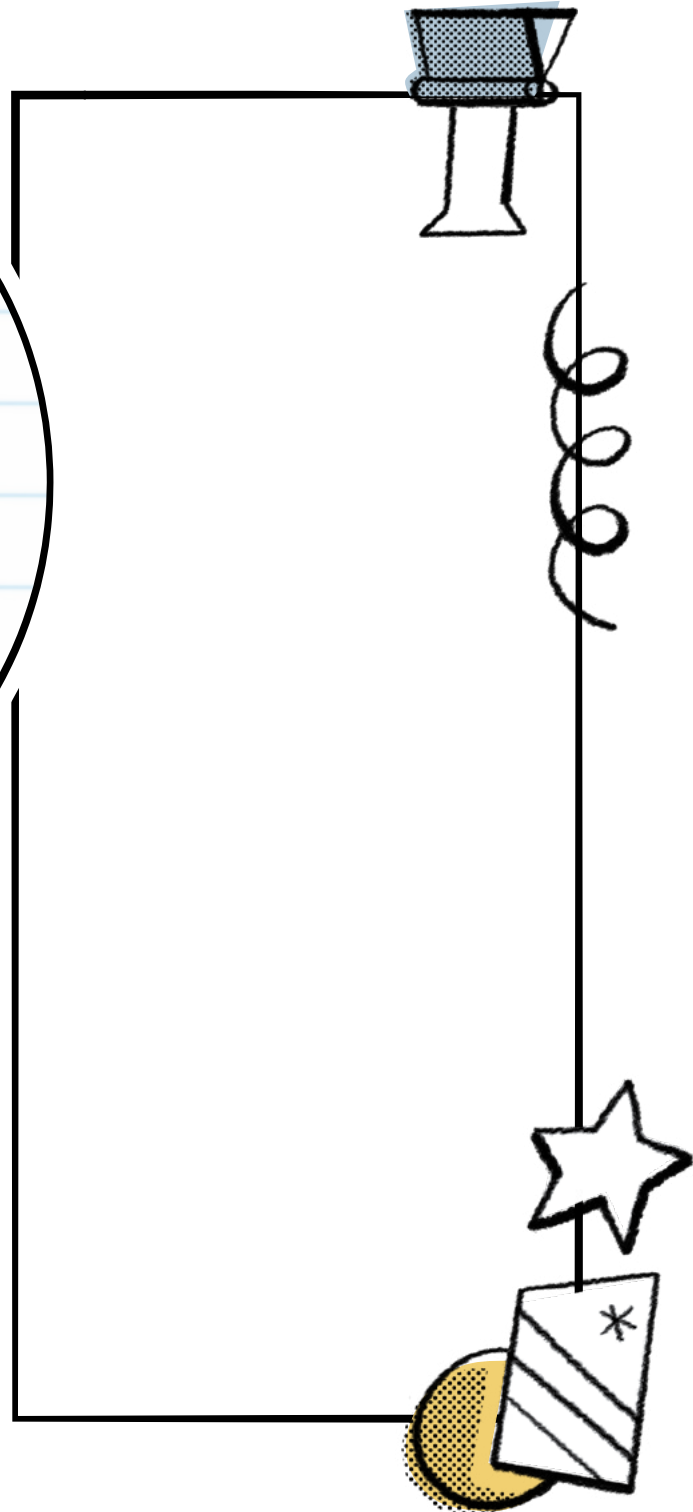
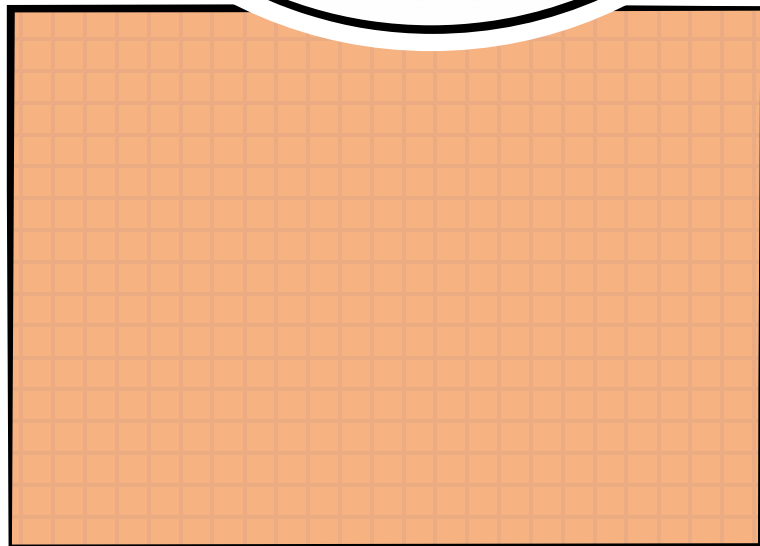
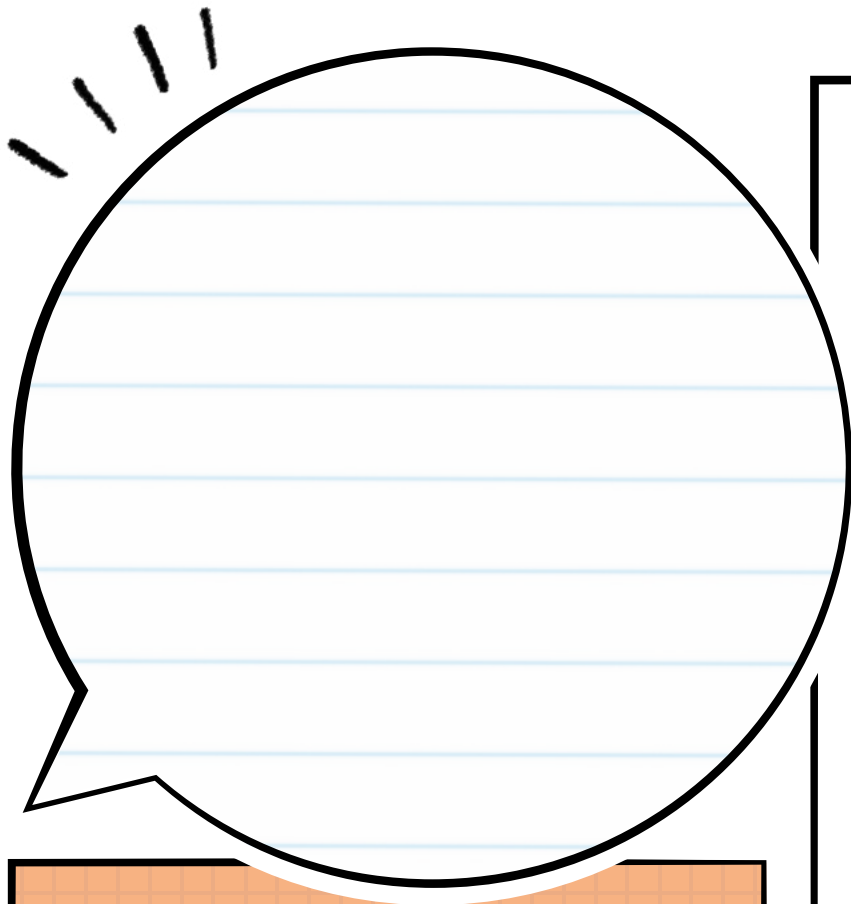
O a savali na tulagaese ia te au?
Aisea?

O le a se mea o le a ou faia nei?
O le a se mea e tatau ona ou
faaauau ona faia?



Aso Toonai

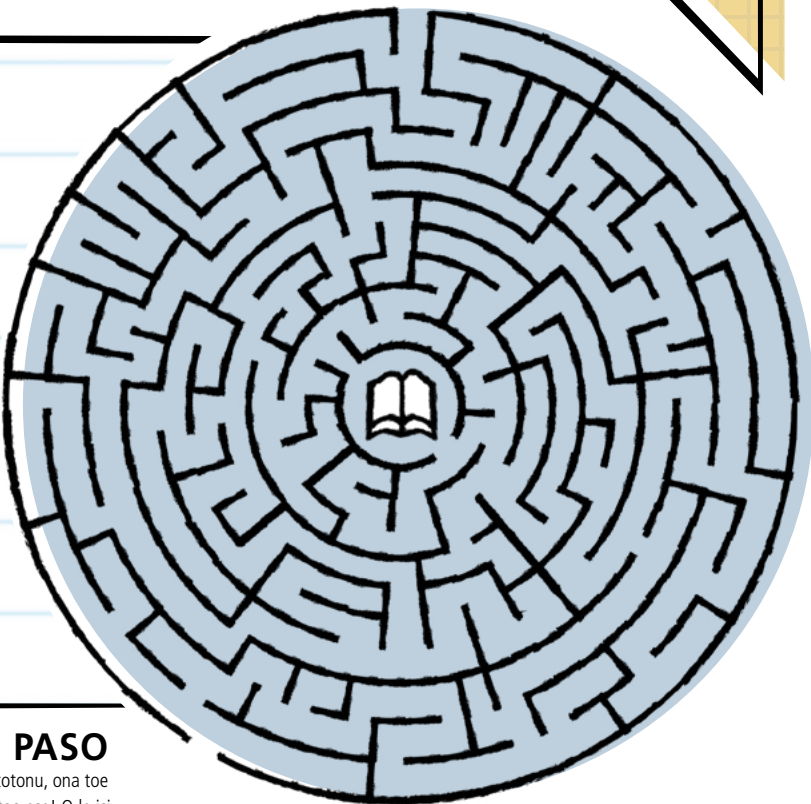
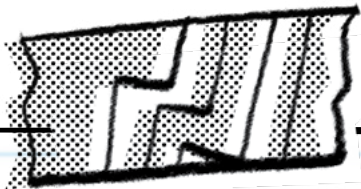
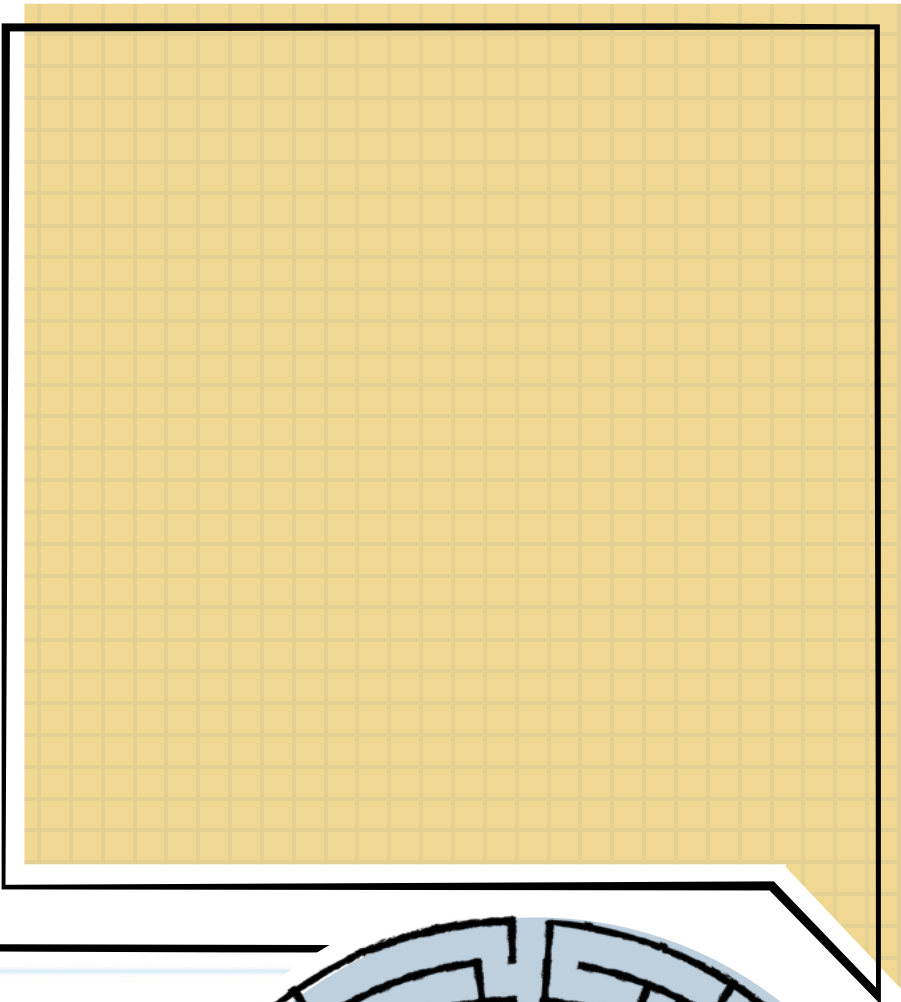
SAUNIGA O LE AOAULI



**O LE A SE MEA
OU TE LAGONA E
MANAOMIA ONA
OU FAIA E FAALATA-
LATA ATILI ATU AI I
LE FAAOLA?**

“OU TE FAAFETAI UA OUTOU O
MAI I LE KONAFESI [AOAO] IA
LAGONAINA MUSUMUSUGA
MAI LE LAGI MA IA LAGONA LE
LATALATA ATILI ATU I LO TATOU
TAMA FAALELAGI MA LE ALII O
IESU KERISO.”

Peresitene Henry B. Eyring?

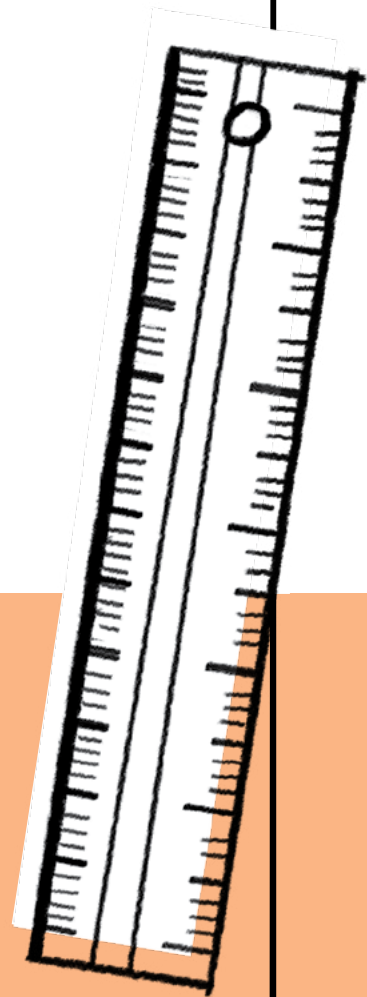


PASO

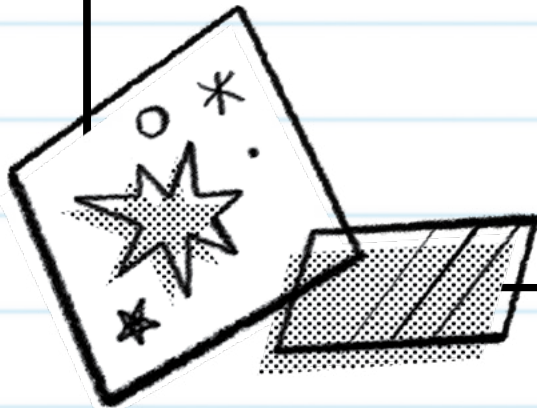
Amata mai soo se faitotoa o le paso, ia oo atu i tusitusiga paia i le ogatotonu, ona toe sue lea o lou auala e toe foi mai ai, ae o le taimi lenei e ala i se faitotoa ese! O le isi tulafono e tasi: e le mafai ona e faaaogaina faalua soo se aualasavali o le paso.

**"OU TE FOLAFOLA ATU IA TE OE A O E FAAFOFOGA I
LE SIUFOFOGA O LE ALII IA TE OE I AOAOGA O LENEI
KONAFESI AOA, ONA FAATINO LEA O NA UUNAIGA, O
LE A E LAGONAINA LE AAO O LE LAGI I OU LUGA, MA O
LE A FAAMANUIAINA AI LOU OLAGA MA OLAGA O ISI O
LOO SIOMIAINA OE.**

Elder Neil L. Andersen³



O LE A SE MEA NA VALAAULIA AU E FAI
O LE A FESOASOANI IA TE AU E AVEA
ATILI AI E FAAPEI O IESU KERISO?
O LE A FAAPEFEA ONA OU FAATINOINA
LENA VALAAULIA?



llllll





VALIVALI AU!

Aso Sa **SAUNIGA O LE TAEAO**



lllll

**NA FAAPEFEA ONA OU LAGONAINA LE ALOFA
O LE FAAOLA I LE TAIMI O LENEI SAUNIGA?**



**“SA MATOU TATALO, MA VALAAULIA OUTOU IA TATALO, INA IA FAATASI MAI LE AGAGA O
LE ALII MA I TATOU I SE FAATELEGA NA’UA E MAFAI AI ONA E FAALOGO I SAVALI UA I AI I LE
FAAOLA E FAAPITOA MO OE—SAVALI O LE A AUMAIA LE FILEMU I LOU AGAGA.”**

Peresitene Russell M. Nelson⁴



Aso Sa

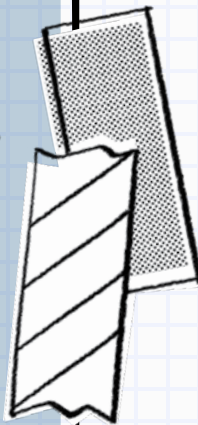
SAUNIGA O LE AFIAFI

'AFAI MATOU TE AOA O ATU I LE
AGAGA MA OUTOU FAALOGO I LE
AGAGA, O NISI O I MATOU O LE A
PAI ATU I LOU TAGATA, MA AUINA
ATU SE SAVALI FAAPEROFETA
PATINO E FAAPITOA LAVA MO OE".

Elder Jeffrey R. Holland⁵



**O A NI UUNAIGA FAALEAGAGA UA OU
MAUAINA? O LĒ FEA E SILI ONA TAUA
MO AU I LE TAIMI NEI?**

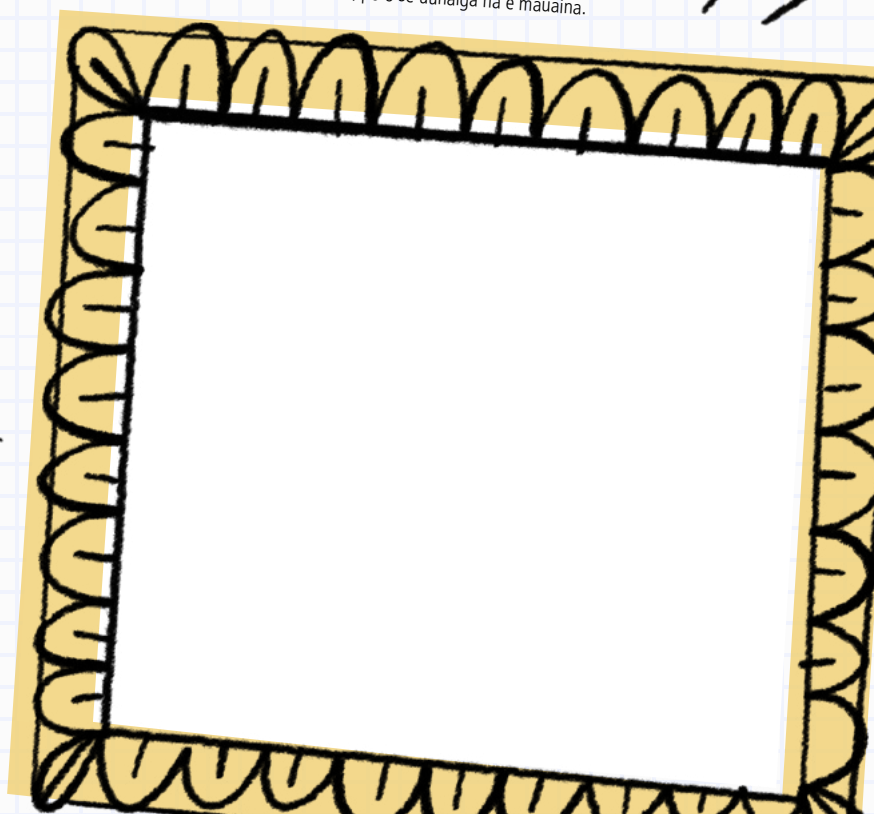


ATA TUSI

Tusi le taimi e te fiafia ai mai le konafesi iinei! E mafai ona ave'a o se failauga, se tala, po o se uunaiga na e mauaina.

FAAMATALAGA

1. Russell M. Nelson, "Tuleiga Faaiu," konafesi aoao o Ape. 2019 (*Ensign* po o le *Liahona*, Me 2019, 111).
2. Henry B. Eyring, "O le Mea ua Faapotopoto ai se Toalua po o se Toatolu," konafesi aoao ia Ape. 2016 (*Ensign* po o le *Liahona*, Me 2016, 19).
3. Neil L. Andersen, konafesi aoao Oke. 2017 (*Ensign* po o le *Liahona*, Nov 2017, 126).
4. Russell M. Nelson, "Tuleiga Amata," konafesi aoao Ape. 2020 (*Ensign* po o le *Liahona*, Me 2020, 6).
5. Jeffrey R. Holland, konafesi aoao Ape. 2011 (*Ensign* po o le *Liahona*, Me. 2011, 113).
6. Neil L. Andersen, konafesi aoao Oke. 2017 (*Ensign* po o le *Liahona*, Nov. 2017, 125).





UUNAIGA MO OE

"O LOO I AI SE PUSA O OA O TAITAIGA FAALELAGI O LOO
FAATALITALI MO LOU MAUAINA I SAVALI O LE KONAFESI AOA. O
LE SUEGA LA MO I TATOU TAITOATASI O LE AUALA TATOU TE TALI
ATU AI I MEA TATOU TE FAALOGO I AI, O MEA TATOU TE FAITAU I AI,
MA MEA TATOU TE LAGONAINA."

Elder Neil L. Andersen⁶

MANAOMIA NISI KOPI?

Sii mai ma lolomi le tusigamanatu lenei i le
[conference.ChurchofJesusChrist.org](https://www.conference.ChurchofJesusChrist.org).

© 2021 Puletaofia e le Intellectual Reserve, Inc. Ua taofia aia tatau uma.

Ua tuuina atu le faatagaga e toe lolomiina ai lenei tamaitusi mo le faaaogaina e le tagata lava ia, ae le faapisinisi. E aofia i lenei mea le faatagaga mo taitai o le uarota e lolomi ai se aofaiga laitiiti o kopi mo i latou o loo latou auauna atu i ai i le tulaga lautele o o latou valaauga. E tatau ona lolomiina atoa le tamaitusi. E le o aofia ai i lenei mea le faatagaga e tuu ai i luga o le initoneti, fetuunai, pe tufatufa atu lenei anomea. Soo se faaaogaina faapoopoo o lenei anomea e manaomia ai se faatagaga.

[permissions.ChurchofJesusChrist.org](https://www.permissions.ChurchofJesusChrist.org)

