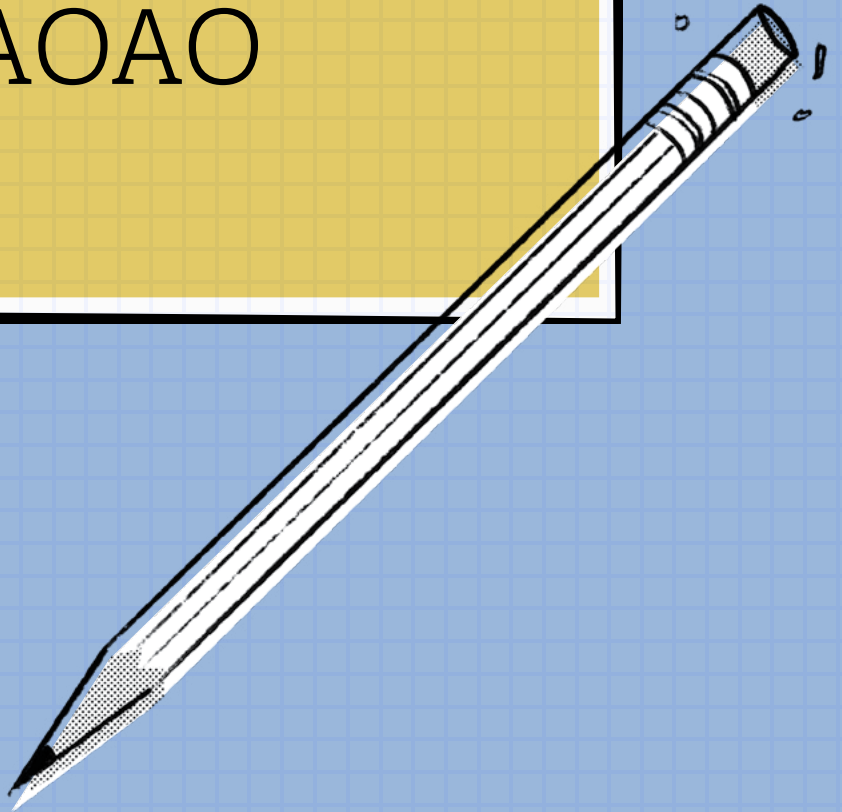
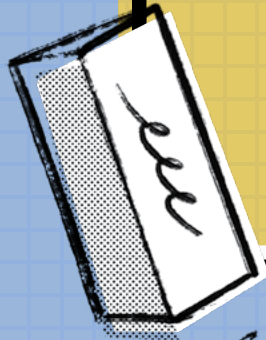


APERILA 2021

llll

TUSIGAMANATU O LE KONAFESI AOAO

*



O LOU TAIALA INA
IA MAUA FAAALIGA
PATINO A O E AUAI I LE
KONAFESI AOAO



O LE AU PERESITENE SILI

Lagolagoina i le aso 14 Ianuari, 2018.



**PERESITENE
DALLIN H. OAKS**
Fesoasoani Muamua
lagolagoina o se Aposetolo:
1984



**PERESITENE
RUSSELL M. NELSON**
Peresitene o le Ekalesia
lagolagoina o se Aposetolo:
1984



**PERESITENE
HENRY B. EYRING**
Fesoasoani Lua
lagolagoina o se Aposetolo:
1995

O LE KORAMA A APOSETOLO E TOASEFULULUA



**PERESITENE
M. RUSSELL BALLARD**
lagolagoina o se Aposetolo:
1985



**ELDER
JEFFREY R. HOLLAND**
lagolagoina o se Aposetolo:
1994



**ELDER
DIETER F. UCHTDORF**
lagolagoina o se Aposetolo:
2004



**ELDER
DAVID A. BEDNAR**
lagolagoina o se Aposetolo:
2004



**ELDER
QUENTIN L. COOK**
lagolagoina o se Aposetolo:
2007



**ELDER
D. TODD CHRISTOFFERSON**
lagolagoina o se Aposetolo:
2008



**ELDER
NEIL L. ANDERSEN**
lagolagoina o se Aposetolo:
2009



**ELDER
RONALD A. RASBAND**
lagolagoina o se Aposetolo:
2015



**ELDER
GARY E. STEVENSON**
lagolagoina o se Aposetolo:
2015



**ELDER
DALE G. RENLUND**
lagolagoina o se Aposetolo:
2015



**ELDER
GERRIT W. GONG**
lagolagoina o se Aposetolo:
2018



**ELDER
ULISSES SOARES**
lagolagoina o se Aposetolo:
2018

AU PERESITENE AOA O TAMAITAI TALAVOU



**SISTER
MICHELLE D. CRAIG**
Fesoasoani Muamua



**SISTER
BONNIE H. CORDON**
Peresitene



**SISTER
BECKY CRAVEN**
Fesoasoani Lua



**BROTHER
AHMAD S. CORBITT**
Fesoasoani Muamua



**BROTHER
STEVEN J. LUND**
Peresitene



**BROTHER
BRADLEY R. WILCOX**
Fesoasoani Lua

AU PERESITENE AOA O LE AOGA SA



**BROTHER
MILTON CAMARGO**
Fesoasoani Muamua



**BROTHER
MARK L. PACE**
Peresitene



**BROTHER
JAN E. NEWMAN**
Fesoasoani Lua

Musumusuga E AMATA IINEI.



O le konafesi aoao o se avanoa lelei lava mo le Alii e fetalai tuusao atu ai ia te oe. A o saunoa mai auauna a le Alii, o le a molimau atu le Agaga Paia ia Iesu Keriso (tagai i le loane 15:26) ma aoao outou “mea uma tou te faia” (2 Nifae 32:3). Vaai faalemafaufau faapea—a o e faalogo ma le faamaoni ma le agaga tatalo i mea ua tau mai e failauga, e mafai e le Alii ona tuuina atu ia te oe faaaliga patino! O le a la tau atu ia te oe le mea e finagalo o la ia e iloa, ma le mea e finagalo o la ia e faia. O le ata o loo i lalo ua faaaliga ai le auala e mafai ona aoga ai lenei mea:



O LEA, IA AMATA SAUNIUNI I LE TAIMI NEI E #FAALOGO IA TE IA.

- Tatalo ina ia i ai le Agaga Paia e musuia oe.
- Tusi i lalo soo se fesili o ia te oe.
- Fai se fuafuaga e faalogo pe faitau le tele o le konafesi aoao e te mafaia.



FAALOGO I LE “SIUFOFOGA O LE ALII” A O E FAALOGO ATU I FAILAUGA TAITASI (tagai i leMataupu Faavae ma Feagaiga 68:3–4).



O LE A FETALAI ATU LE AGAGA PAIA I LOU LOTO MA LOU MAFAUFAU (tagaiMataupu Faavae ma Feagaiga 8:2–3).



TUSI IA UUNAIGA E TE MAUAINA (tagai i le2 Nifae 29:11).

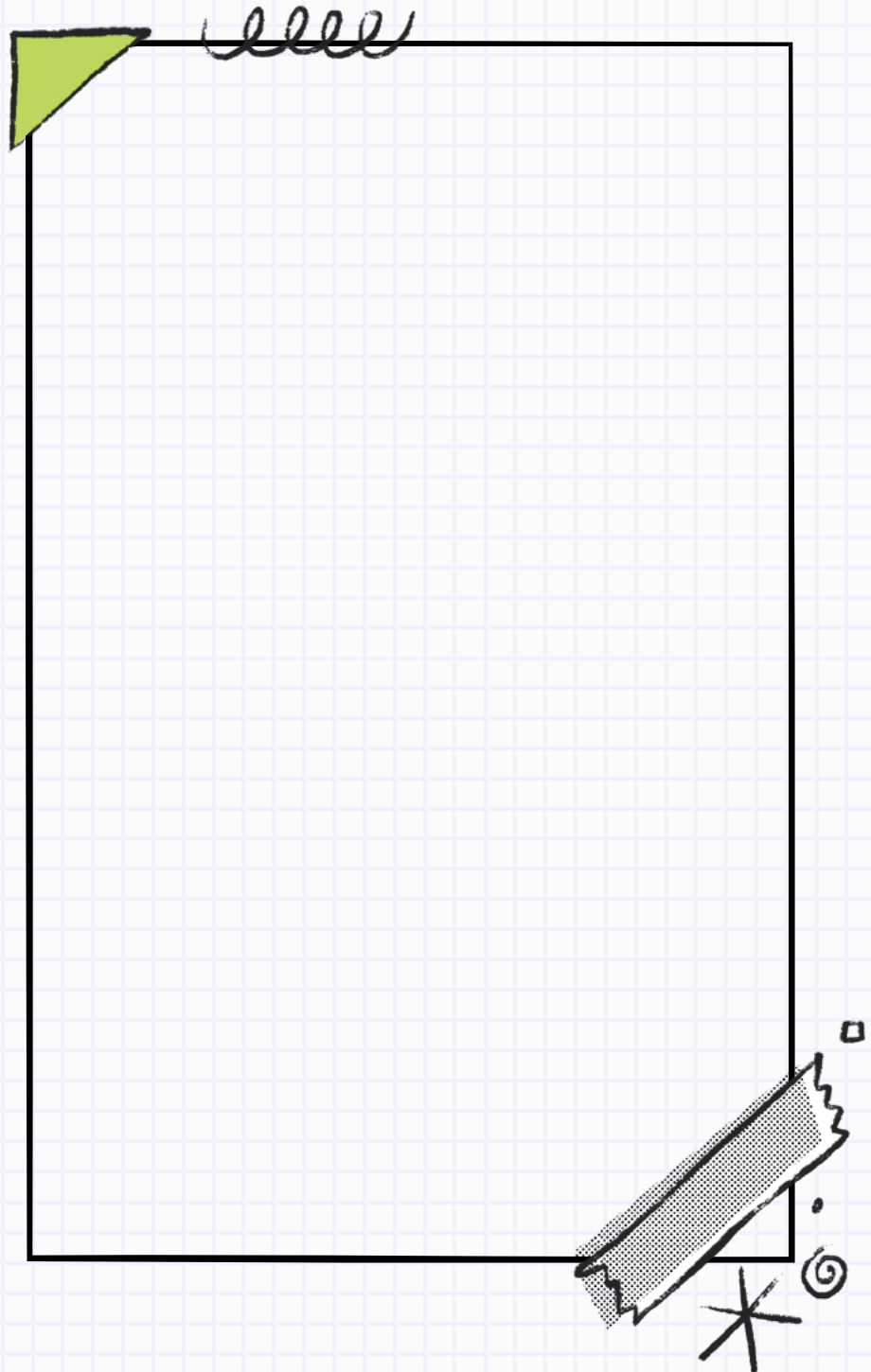
FAATINO MEA UA E AOAONA MA LAGONAINA (tagailoane 7:17;1 Nifae 3:7).

Aso Toonai

SAUNIGA O LE TAEAO

Ua musuia e le Alii ia failauga taitasi i savali faapitoa e finagalo o la ia latou faasoa mai. O le a la tuuina mai foi savali e ala i le Agaga Paia e fetuunai mo na o oe lava. Faalogo mo na mea uma ao e auai i le konafesi aoao.

**O LE A SE MEA NA OU
AOAONA E UIGA IA IESU
KERISO I LE ASŌ?**

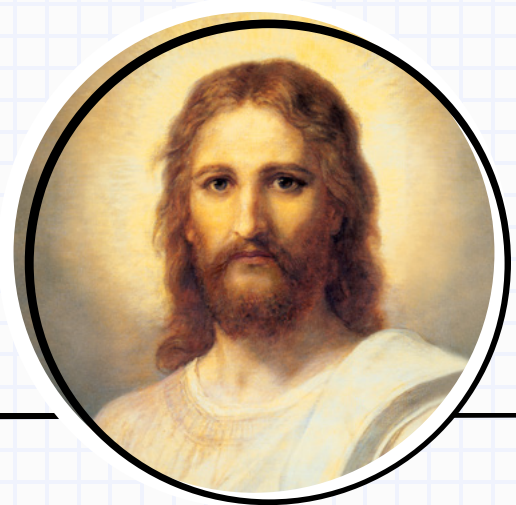


O le a se mea ou te lagonaina o
loo taumafai le Alii e aoao mai ia
te au?

O LE FAAMOEMOEGA O LENEI KONAFESI MA
KONAFESI AOAO UMA O LE FESOASOANI LEA IA
I TATOU IA FAALOGO IA TE IA.”

Peresitene Russell M. Nelson¹

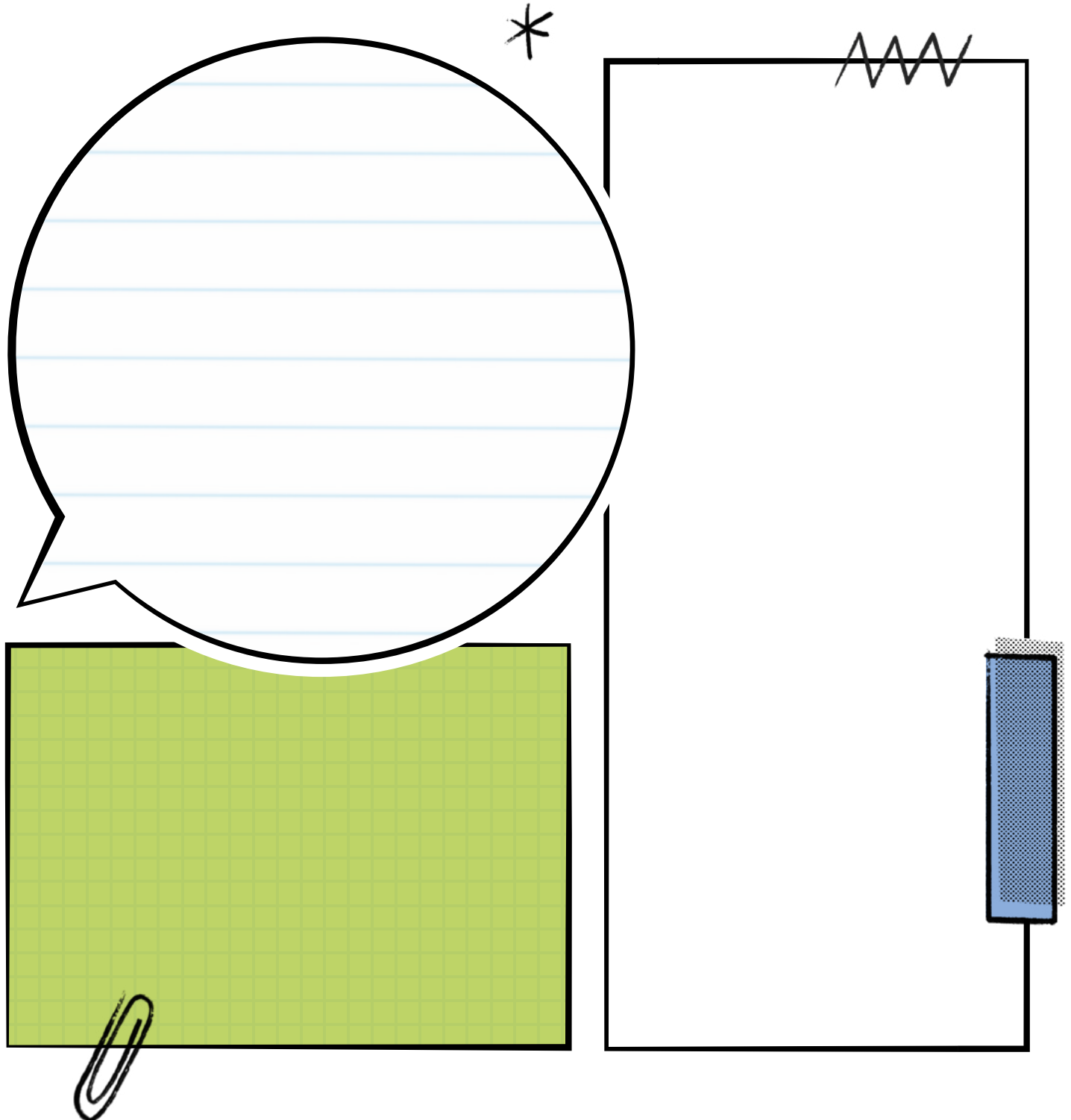
O a savali na tulagaese ia te au?
Aisea?




O le a se mea o le a
ou faia nei?

Aso Toonai

SAUNIGA O LE TAEAO



A o e tusia i lalo uunaiga e te mauaina i le konafesi aoao, ua e faali atu i le Alii lou manao ia aoaoina e la. A o e faatinoina mea ua la aoaoina ai oe, o le a e avea atili e faapei o la.



**O LE A SE MEA OU TE
LAGONA E MANAOMIA
ONA OU FAIA E FAALATA-
LATA ATILI ATU AI I LE
FAAOLA?**

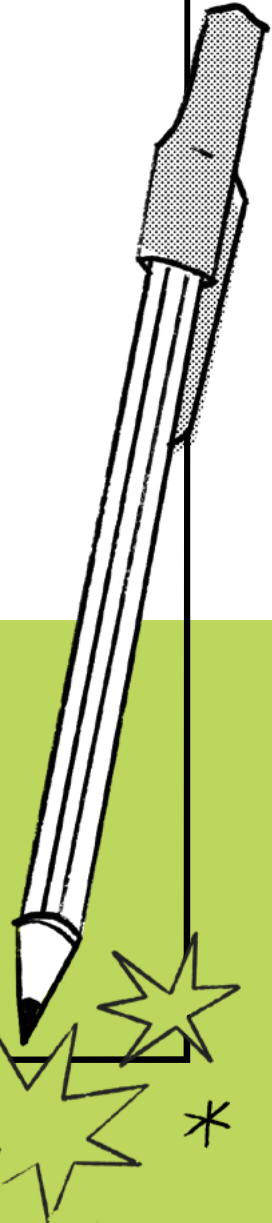


The graphic area consists of three main elements: a yellow grid paper in the top right corner with a blue pushpin; a white lined paper in the bottom left corner with a pink margin line and a starburst sticker; and a large white speech bubble on the right side.

Aso Toonai **SAUNIGA O LE TAEAO**

elll

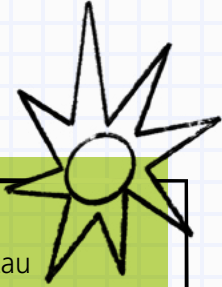
Tatalo mo le Agaga Paia e aoao oe a o e auai i le konafesi aoao. O le a la tuu atu ia te oe manatu e faapitoa lava mo oe. Tusifaamaumau nei lagona uunaia, ma fai se fuafuaga e faatino.



**O LE A SE MEA NA VALAAULIA
AU E FAI O LE A FESOASOANI
IA TE AU E AVEA ATILI AI E
FAAPEI O IESU KERISO?**



**"O LE MEA O LOO TAUTALAGIA E LE TUTUSA LE TAU E PEI O MEA TATOU TE FAALOGOINA
MA MEA TATOU TE LAGONAINA."**

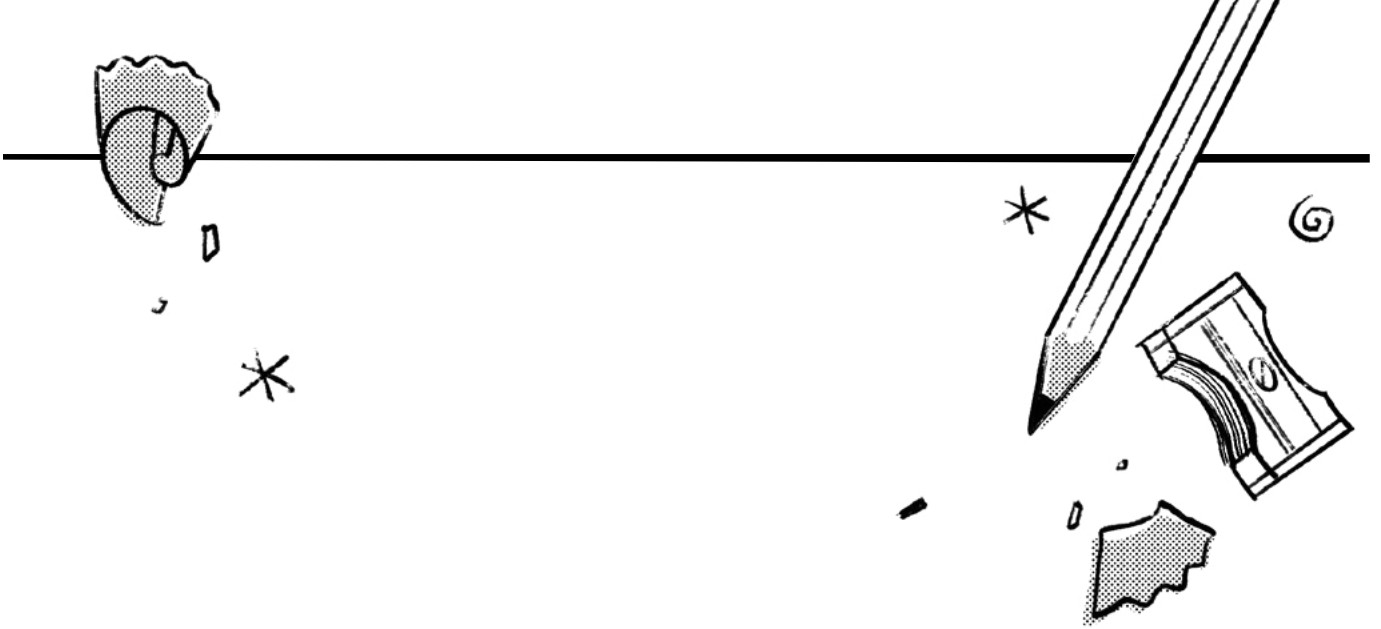


A o e faalogologo pe faitau
i savali o le konafesi aoao,
faamaumau ia uunaiga
faaleagaga e te mauaina. O a ni
upumoni ua aoaina? O lē fea e
sili ona taua ia te oe?

Aso Sa **SAUNIGA O LE TAEAO**

**NA FAAPEFEA ONA OU
LAGONAINA LE ALOFA
O LE FAAOLA I LE TAIMI
O LENEI SAUNIGA?**

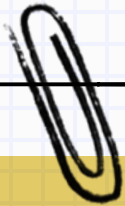




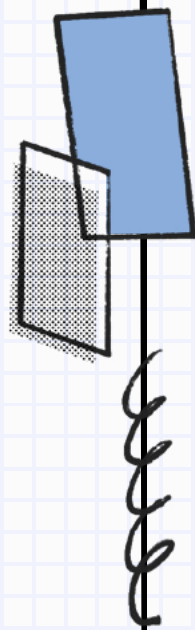
**“O TAIMI MUSUIA FAALEAGAGA E OO MAI PE A TATOU FAALOGO MA LE AGAGA TATALO
I KONAFESI AOA O MA PE A LELEI ATILI LO TATOU TAUSIA O POLOAIGA.”**

Elder Neil L. Andersen³

Aso Sa **SAUNIGA O LE AFIAFI**

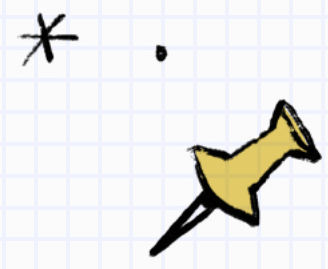


E taua le faalogo i savali o loo aoaoina e failauga taitasi. E tutusa lava le taua o le faalogo i savali o loo taumafai le Agaga Paia e aoao atu ia te oe.



lllll

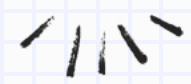
**OLE A SE MEA NA OU
AOAOINA E UIGA I LE
TOGIOLA A IESU KERISO?**



lll

**"O I LATOU O LE A SAUNOA
MAI IA I TATOU NA SAILIA LE
FESOASOANIGA MA LE TAITAIGA
A LE LAGI A O LATOU SAUNIA A
LATOU SAVALI. . . O LAU TATALO
INA IA FAATUMUINA I TATOU
UMA E LE AGAGA O LE ALII
A O TATOU FAALOGOLOGO
ATU MA AOAQ."**

Peresitene Thomas S. Monson⁴



Taimi FIAFIA

E Mafai Ona E Maua Pea e Tutusa?

O nisi nei o seti o pea o loo maua i tusitusiga paia. Faaaoga fuaiupu nei e fesoasoani ia te oe e faatusatusa ai mea o loo i le itu tauagavale faatasi ma mea o loo i le itu taumatau.

- Mataupu Faavae ma Feagaiga 20:77, 79



- Alema 32:26–30



- Ioane 10:14–15



- 1 Samuēlu 17:38–40, 46–50

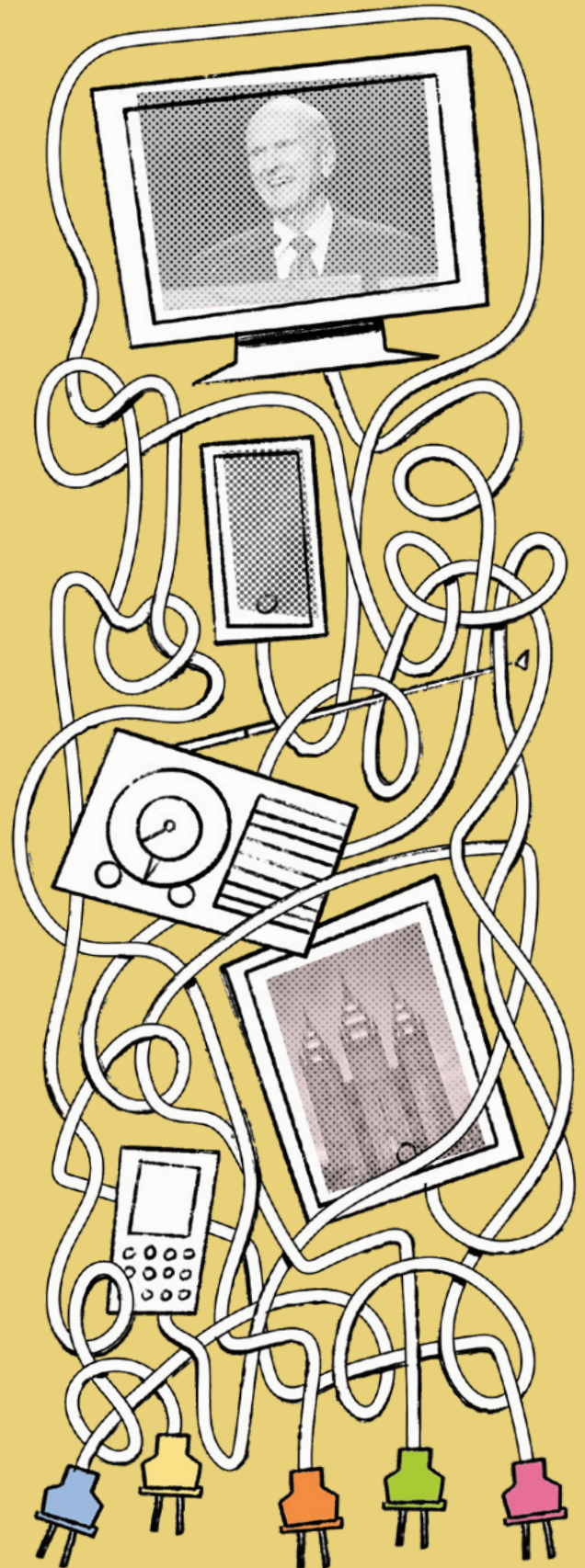
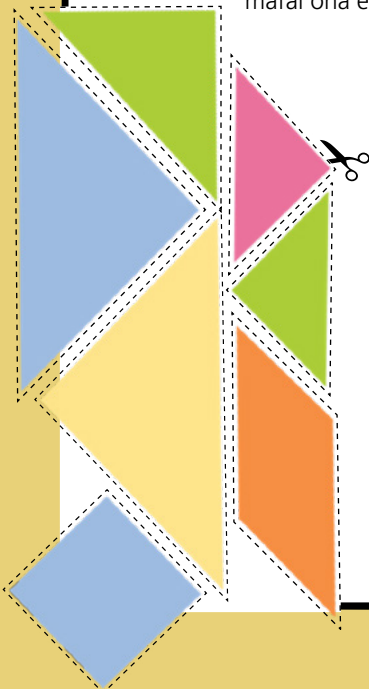


- Mareko 6:34–44



Lu'i o le Tanakarama

O Tanakarama o se paso Saina anamua. Oti ese siepi o i le itu tauagavale ma vaai pe mafai ona e toefatuina le faatagata o le agelu o Moronae, le moligao, ma le lupe o loo faaali atu iinei. E mafai ona e fatuina nisi mea?



Palaka i le Konafesi

Mulimuli i uaea taitasi e fesootai ma auala eseese e auai ai i le konafesi.

O Lea La, O LE A NEI LA?



Atonu ua uma le konafesi aoao ae o aafiaga i mea na e aoaina ua faatoa amata. O le a se mea o le a e faia e faatino ai mea na e faalogo i ai ma lagonaina? Atonu e tele mea e te manatu e mafai ona e galue ai, ae e le mafai ona e faia uma i le taimi e tasi. O ni nai fesili nei e fesoasoani ia te oe e fuafua ai au laasaga e sosoo ai:

1. O le a se mea ua musuia oe e faaauau le faia pe suia i lou olaga?

2. O fea o nei mea e te lagona e sili ona taua le faatino i le taimi nei?

3. O a sini e mafai ona setiina pe toe tuuto i ai?

4. O ai e mafai ona e fesili i ai e fesoasoani ia te oe?

FAAMATALAGA

1. Russell M. Nelson, "Tuleiga Amata," konafesi aoao Ape. 2020 (*Ensign* po o le *Liahona*, Me 2020, 6).
2. Robert D. Hales, konafesi aoao Oke. 2013 (*Ensign*, po o le *Liahona*, Nov. 2013, 6).
3. Neil L. Andersen, konafesi aoao Ape. 2020 (*Ensign* po o le *Liahona*, Me 2020, 21).

4. Thomas S. Monson, "Susu Maia ma Talaaao Mai i le Konafesi," konafesi aoao Oke. 2009 (*Ensign* po o le *Liahona*, Nov. 2009, 6).
5. M. Russell Ballard, "konafesi aoao Ape. 2020 (*Ensign* po o le *Liahona*, Me 2020, 8).



UUNAIGA MO OE

“A O TATOU FAALOGOLOGO ATU I LE AGAGA I . . . LE FAAIUGA O LENEI
VAIASO, MAFAUFAU PO O LE A SE TAULAGA O LE A E OFOINA ATU I
LE ALII I LE AMIOTONU I ASO O LUMANAI. IA LOTOTETELE—FAASOA
ATU I SE TASI E TE TALITONUINA, MA O LE MEA E SILI ONA TAUA,
FAAMOLEMOLE IA FAAAVANOA SE TAIMI E FAI AII!”

Peresitene M. Russell Ballard⁵

MANAOMIA NISI KOPI?

Sii mai ma lolomi le tusigamanatu lenei i le
[conference.ChurchofJesusChrist.org](https://www.churchofjesuschrist.org).

© 2021 Puletaofia e le Intellectual Reserve, Inc.
Ua taofia aia tatau uma.

Ua tuuina atu le faatagaga e toe lolomiina ai lenei tamaitusi mo le faaaogaina e le tagata lava ia, ae le faapisinisi. E aofia i lenei mea le faatagaga mo taitai o le uarota e lolomi ai se aofaiga laitiiti o kopi mo i latou o loo latou auauna atu i ai i le tulaga lautele o o latou valaauga. E tatau ona lolomiina atoa tamaitusi. E le o aofia ai i lenei mea le faatagaga e tuu ai i luga o le initoneti, fetuunai, pe tufatufa atu lenei anomea. Soo se faaaogaina faaopoopo o lenei anomea e manaomia ai se faatagaga.

[faatagaga. ChurchofJesusChrist.org](https://www.churchofjesuschrist.org)

