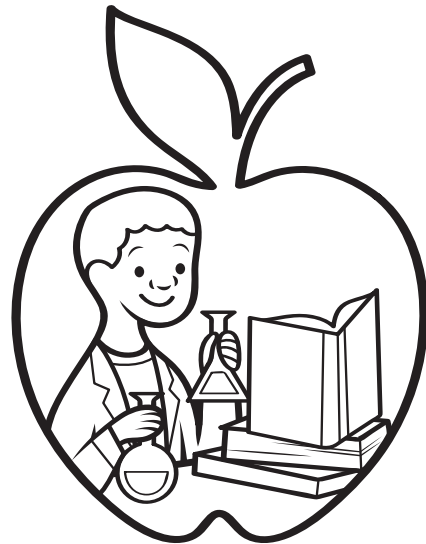
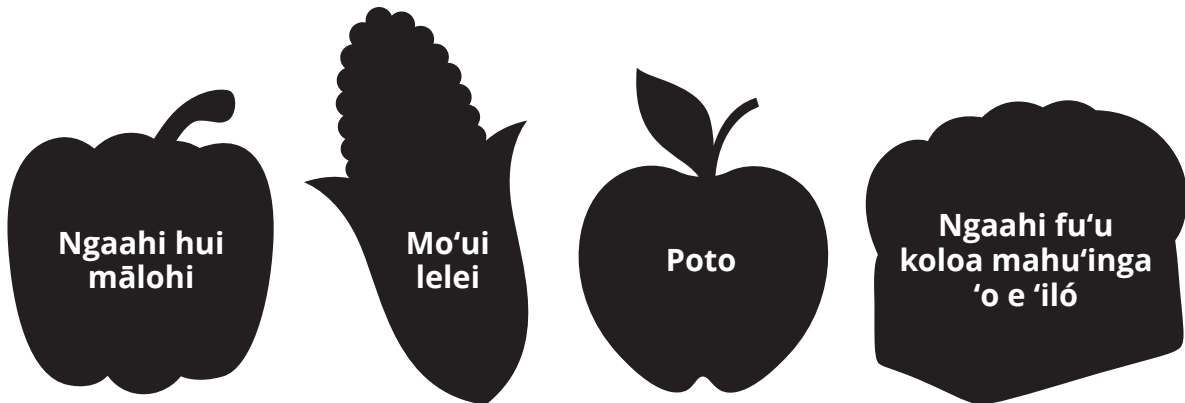


'I he **Lea 'o e Potó**, 'oku ako'i kitautolu 'e he 'Eikí ke tau kai 'a e me'atokoni 'oku fakatupu mo'ui lelei pea fakamama'o mei he ngaahi me'a te nau ala uesa hotau sinó. Fakatauhia 'a e ngaahi tāpuaki 'oku tala'ofa mai 'e he 'Eikí, kiate kinautolu 'oku talangofua ki he Lea 'o e Potó.



Tokāteline mo e Ngaahi Fuakava 89

 Ko e hā 'oku tala'ofa mai 'e he 'Eikí kiate kinautolu 'oku nau tauhi (talangofua) ki he Lea 'o e Potó?