

耶和华透过摩西，命令法老释放以色列人，可是法老不听从神的命令。

把神使法老谦卑所降罚的灾祸与对应的形状配对。



水变作血



牲畜生病



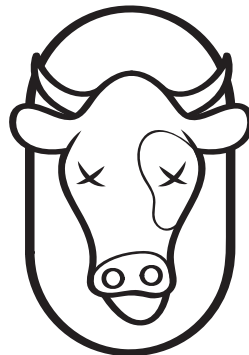
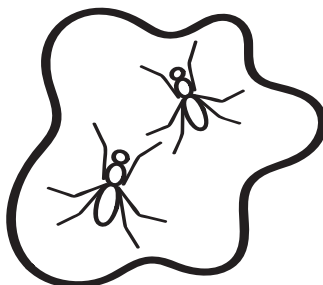
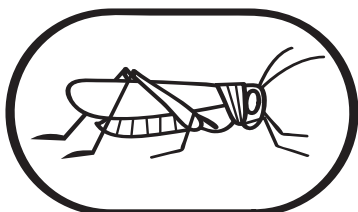
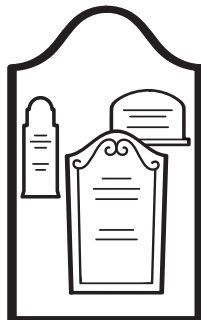
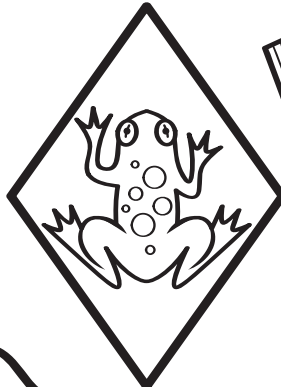
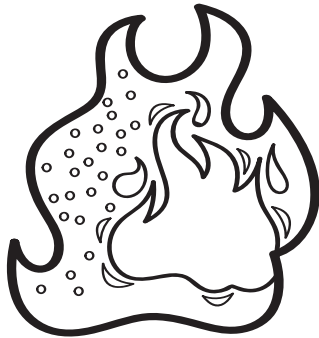
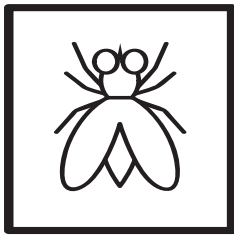
雷火和冰雹



头胎的死亡



蝗虫



三天的黑暗



苍蝇



青蛙



虱子



脓疮



出埃及记第7~12章



亚伦如何帮助摩西？