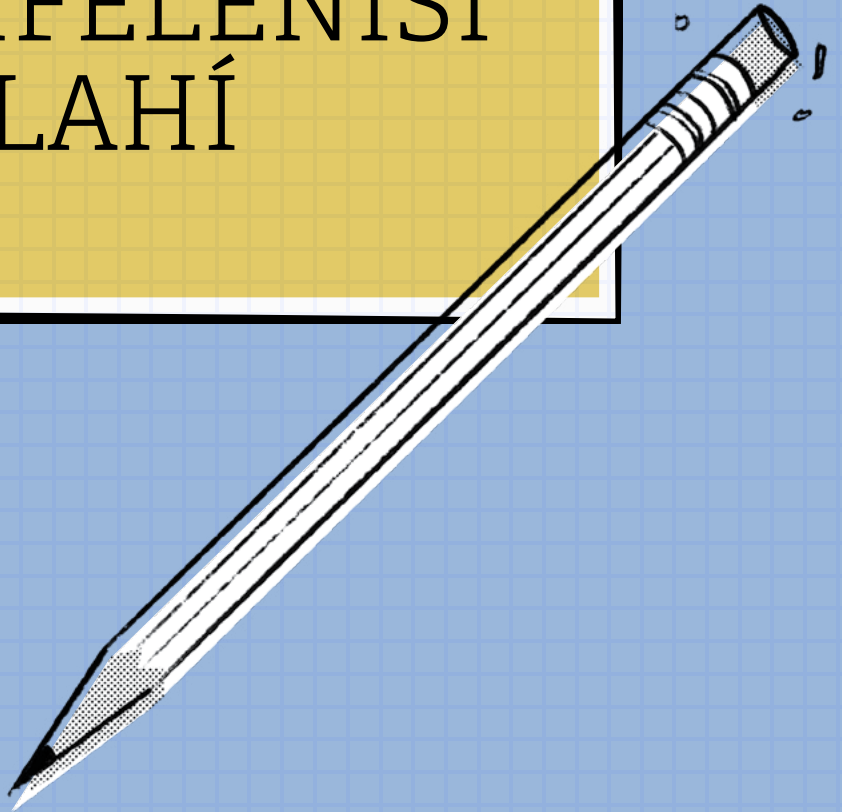


**'EPELELI 2021**

**KI'I TOHI  
KI HE  
KONIFELENISI  
LAHÍ**



**KO E FAKAHINOHINO  
KE MA'U HA FAKAHĀ  
FAKATAAUTAHA 'I HO'O KAU  
'I HE KONIFELENISI LAHÍ**



## KO E KAUPALESITENISĪ 'ULUAKĪ

*Nā'e hikinimā'i i he 'aho 14 'o Sānuāli 2018*



**PALESITENI  
DALLIN H. OAKS**  
Tokoni 'Uluakī  
*hikinimā'i ke hoko ko ha  
'Aposetolo: 1984*



**PALESITENI  
RUSSELL M. NELSON**  
Palesiteni 'o e Siasī  
*hikinimā'i ke hoko ko ha  
'Aposetolo: 1984*



**PALESITENI  
HENRY B. EYRING**  
Tokoni Uā  
*hikinimā'i ke hoko ko ha  
'Aposetolo: 1995*

## KO E KŌLOMU 'O E KAUPAPOSETOLO 'E TOKO HONGOFULU MĀ UĀ



**PALESITENI  
M. RUSSELL BALLARD**  
*hikinimā'i ke hoko ko ha  
'Aposetolo: 1985*



**'ELETĀ  
JEFFREY R. HOLLAND**  
*hikinimā'i ke hoko ko ha  
'Aposetolo: 1994*



**'ELETĀ  
DIETER F. UCHTDORF**  
*hikinimā'i ke hoko ko ha  
'Aposetolo: 2004*



**'ELETĀ  
DAVID A. BEDNAR**  
*hikinimā'i ke hoko ko ha  
'Aposetolo: 2004*



**'ELETĀ  
QUENTIN L. COOK**  
*hikinimā'i ke hoko ko ha  
'Aposetolo: 2007*



**'ELETĀ  
D. TODD CHRISTOFFERSON**  
*hikinimā'i ke hoko ko ha  
'Aposetolo: 2008*



**'ELETĀ  
NEIL L. ANDERSEN**  
*hikinimā'i ke hoko ko ha  
'Aposetolo: 2009*



**'ELETĀ  
RONALD A. RASBAND**  
*hikinimā'i ke hoko ko ha  
'Aposetolo: 2015*



**'ELETĀ  
GARY E. STEVENSON**  
*hikinimā'i ke hoko ko ha  
'Aposetolo: 2015*



**'ELETĀ  
DALE G. RENLUND**  
*hikinimā'i ke hoko ko ha  
'Aposetolo: 2015*



**'ELETĀ  
GERRIT W. GONG**  
*hikinimā'i ke hoko ko ha  
'Aposetolo: 2018*



**'ELETĀ  
ULISSES SOARES**  
*hikinimā'i ke hoko ko ha  
'Aposetolo: 2018*

## KAUPALESITENISĪ LAHI 'O E KAUFINEMUĪ



**SISITĀ  
MICHELLE CRAIG**  
Tokoni 'Uluakī



**SISITĀ  
BONNIE H. CORDON**  
Palesiteni



**SISITĀ  
BECKY CRAVEN**  
Tokoni Uā



**AHMAD S. CORBITT**  
Tokoni 'Uluakī



**BROTHER  
STEVEN J. LUND**  
Palesiteni



**BROTHER  
BRADLEY R. WILCOX**  
Tokoni Uā

## KAUPALESITENISĪ LAHI 'O E KAUTALAVOŪ

## KAUPALESITENISĪ LAHI 'O E LAUTOHI FAKA-SĀPATÉ



**BROTHER  
MILTON CAMARGO**  
Tokoni 'Uluakī



**BROTHER  
MARK L. PACE**  
Palesiteni



**BROTHER  
JAN E. NEWMAN**  
Tokoni Uā

# Ue 'i Fakalaumālié **KAMATA HENI.**

Ko e konifelenisi lahi, ko ha faingamālie lelei ia ke lea fakahangatonu mai 'a e 'Eikí kiate kimoutolú. 'I he lea 'a e kau tamaio'eiki 'a e 'Eikí, 'e fakamo'oni 'a e Laumālie Mā'oni'oni kia Sīsū Kalaisi (vakai, Sione 15:26) pea 'e ako'i atu 'a e "ngaahi me'a kotoa pē 'oku totonu ke mou fai" (2 Nifai 32: 3). Fakakaukau angé ki ai— 'i ho'o lotua mo fakafanongo fakamaatoato ki he me'a 'oku lea 'aki 'e he kau leá, 'e lava ke foaki atu 'e he 'Eikí ha fakahā fakataautaha ma'au! Te Ne fakahā atu 'a e me'a 'okú Ne finangalo ke ke 'ilo'i, pea mo e me'a 'okú Ne fie ma'u ke ke fai. 'Okú fakaha'i 'e he fakatātā 'i laló 'a e founga 'e lava ke ngāue ai 'ení:

## **KO IA, KAMATA LEVA 'A E TEU- TEÚ HE TAIMÍ NI KE #FANONGO- KIATEIA.**

- Lotua ke ue 'i faka-laumālie koe 'e he Laumālie Mā'oni'oni.
- Hiki ha ngaahi fehu 'i te ke ala ma 'u.
- Fa'u ha palani ki he konifelenisi lahi ke ke fanongo ki ai pe lau 'i he lahi taha te ke malavá.



**FAKAFANONGO KI HE  
"LE'O 'O E 'EIKÍ" 'I HO'O  
FANONGO KI HE TOKOTAHA  
LEA KOTOA PĒ**  
(vakai, Tokāteline mo e  
Ngaahi Fuakava 68:3-4).



**'E LEA 'A E LAUMĀLIE  
MĀ'ONI'ONÍ KI HO LOTÓ  
MO HO 'ATAMÁI**  
(vakai, Tokāteline mo e  
Ngaahi Fuakava 8:2-3).



**HIKI 'A E NGAHI ONGO  
'OKÚ KE MA'Ú**  
(vakai, 2 Nifai 29: 11).

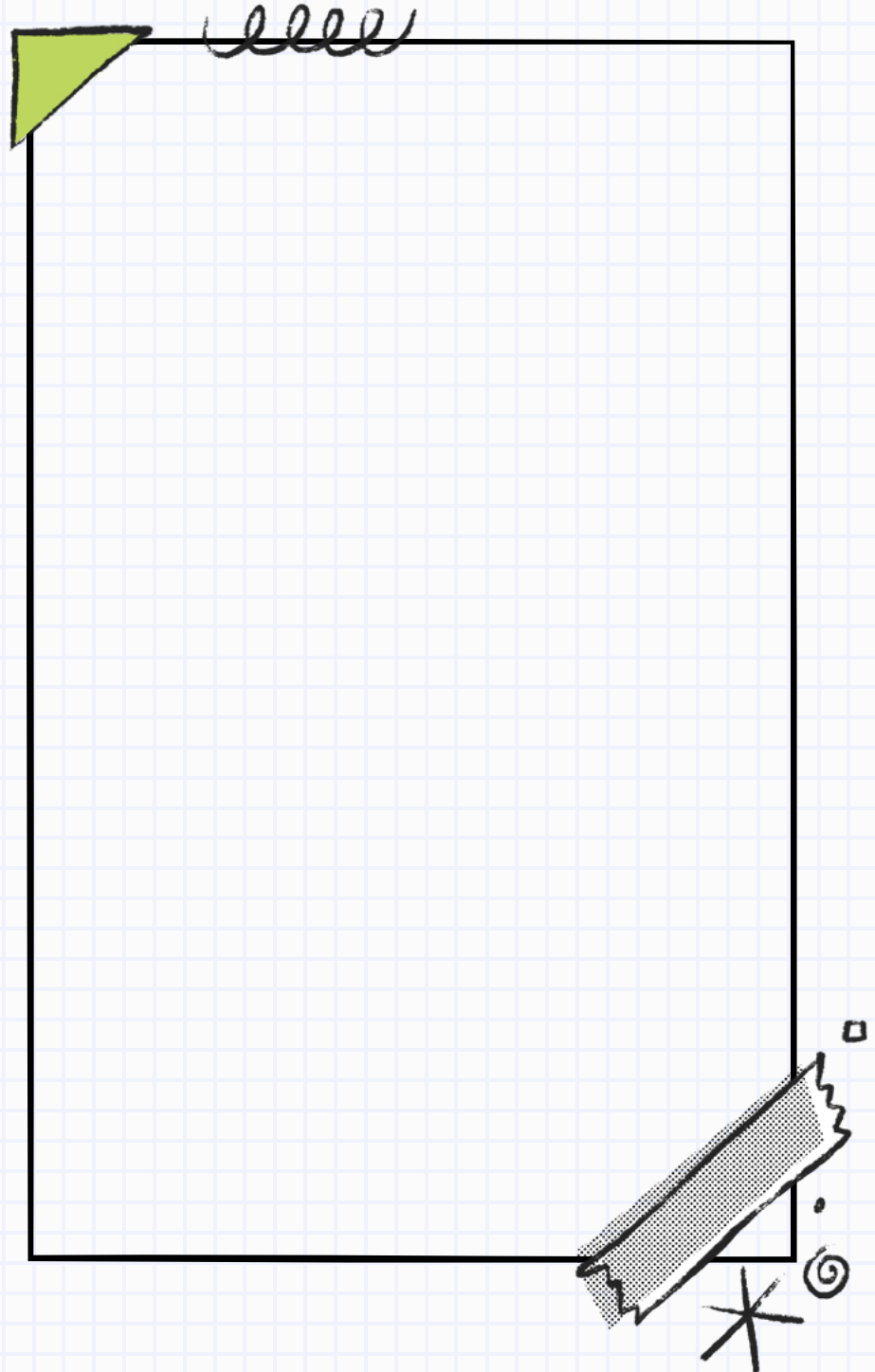
**NGĀUE' 'A E ME'A 'OKÚ  
KE AKO MO ONGO'Í**  
(vakai, Sione 7:17; 1 Nifai 3:7).


# Fakataha 'o e Pongipongi **TOKONAKÍ**

Kuo ue'i 'e he 'Eikí 'a e tokotaha  
lea takitaha mo ha ngaahi  
pōpoaki pau 'okú Ne finangalo  
ke nau vahevahé. Te Ne toe  
'omi foki mo ha ngaahi pōpoaki  
'o fakafou mai 'i he Laumālie  
Mā'oníoní ke fe'unga tonu kiate  
koe pē. Fakafanongo kiate  
kinaua fakatou'osi 'i hó'o kau 'i  
he konifelenisi lahi.

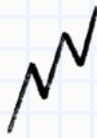
---

**KO E HĀ 'A E ME 'A NA 'Á  
KU AKO FEKAU 'AKI MO  
SĪSŪ KALAISI 'I HE 'AHO  
NÍ?**






Ko e hā 'oku ou ongo 'i 'oku feinga 'a e 'Eikí ke ako 'i kiate aú?


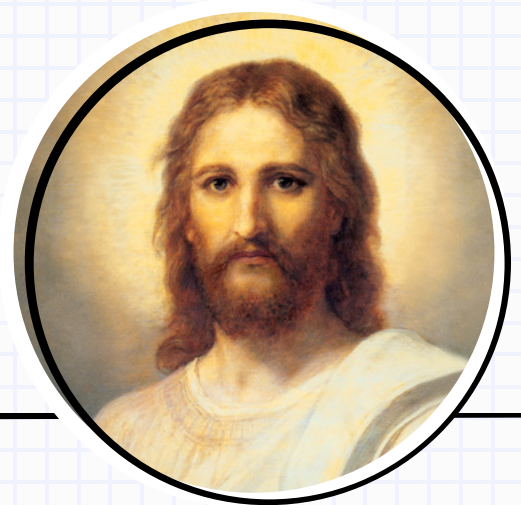


KO E TAUMU 'A 'O E KONIFELENISÍ NI MO E KONIFELENISI LAHI KOTOA PĒ, KE TOKONI 'I KITAUTOLU KE TAU FANONGO KIATE IA.

Palesiteni Russell M. Nelson<sup>1</sup>

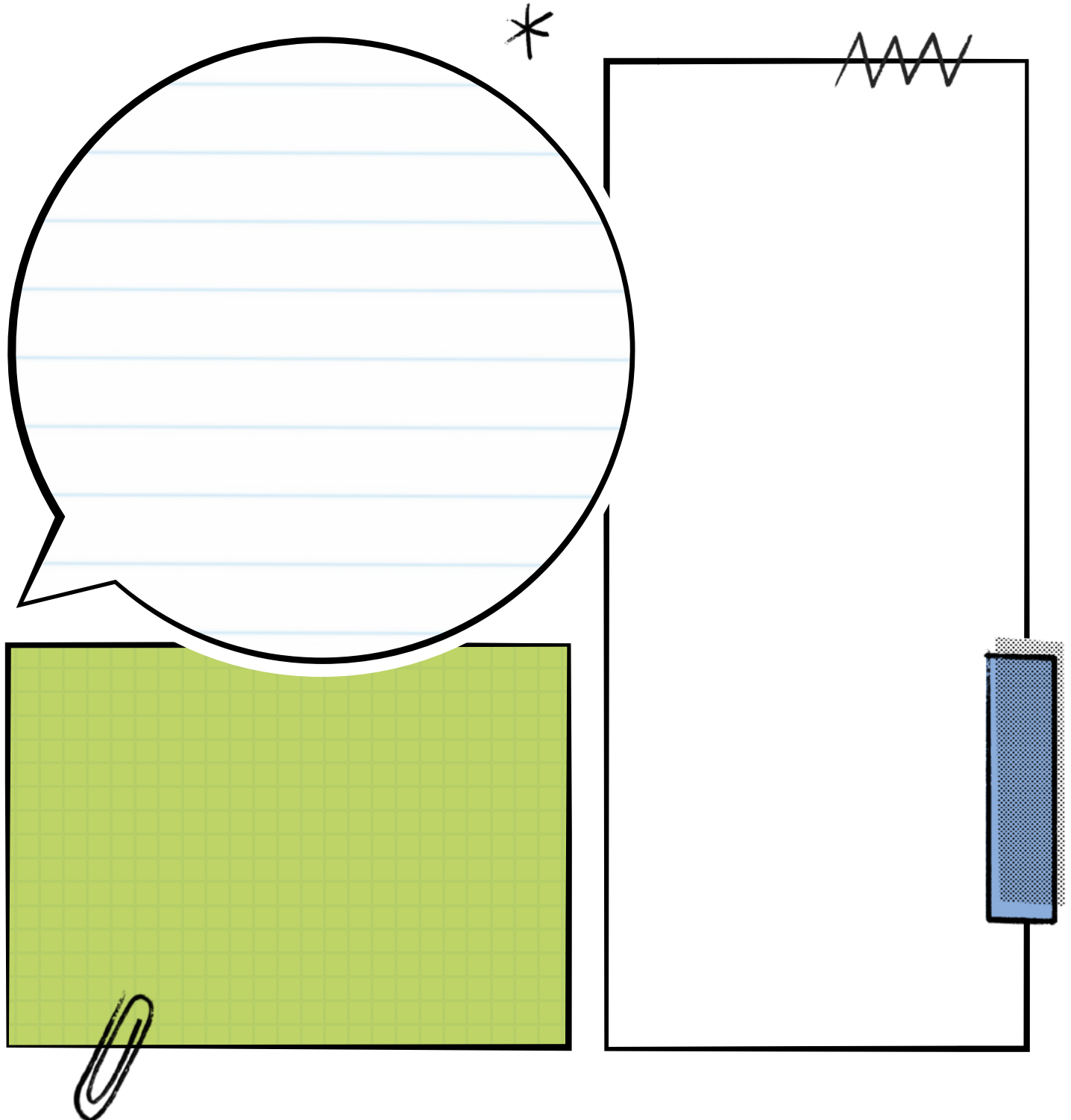


Ko e hā 'a e ngaahi pōpoaki 'oku hā mahino ange kiate aú? Ko e hā hono 'uhingá?



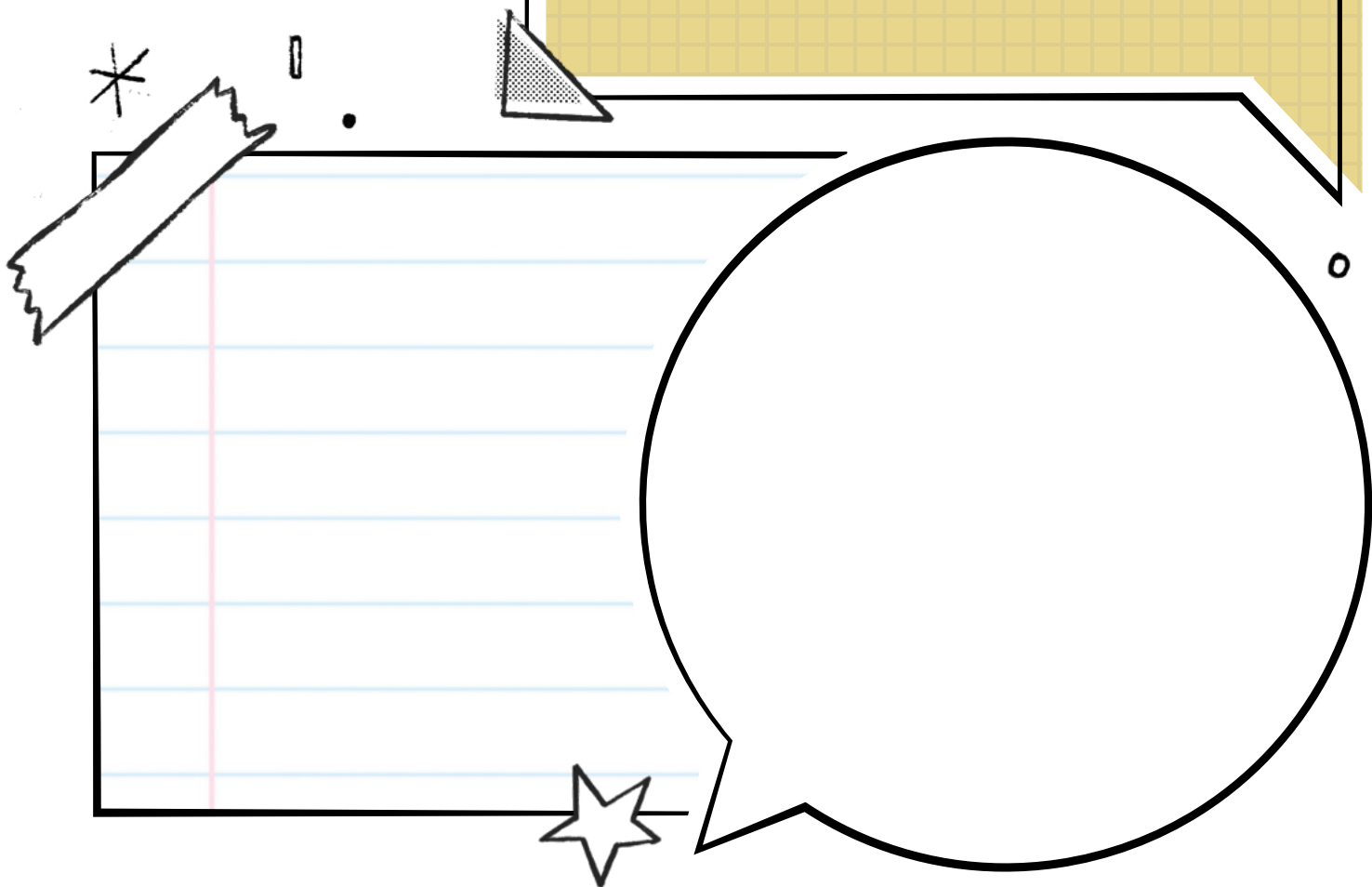
Ko e hā te u fai he taimi ní?

# Fakataha 'o e Ho'atā **TOKONAKÍ**



'I ho'ó hiki 'a e ngaahi ongo 'okú ke ma'u 'i he konifelenisi lahi, 'okú ke fakahaai ki he 'Eiki 'a ho'o holi ko ia ke Ne ako'i koé. 'I ho'o ngāue 'o fakatatau mo e me'a 'okú Ne ako'i atú, te ke hoko ai 'o hangē ange ko lá.

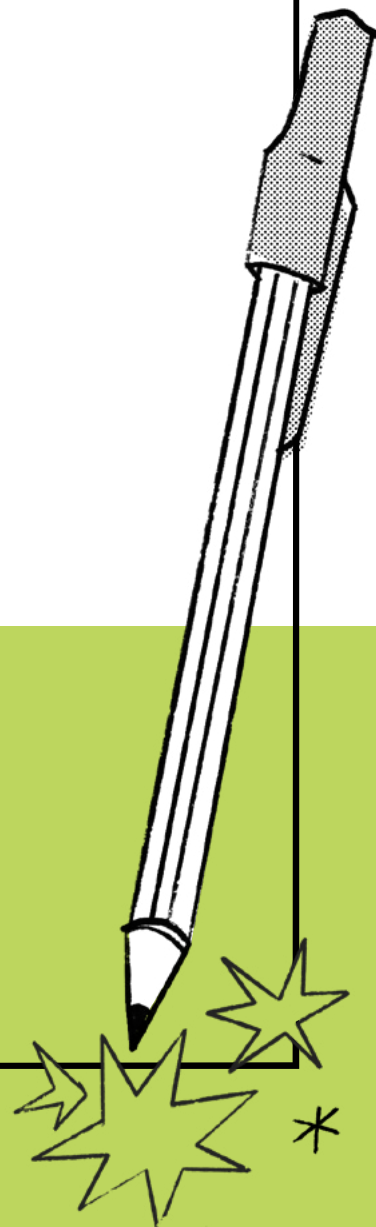
**KO E HĀ 'OKU OU ONGO 'I  
'OKU FIE MA 'U KE U FAI  
KE U TOE OFI ANGE AI KI  
HE FAKAMO'UÍ?**



# Fakataha 'o e Efiafi **TOKONAKÍ**

*elll*

Lotua ke ako'i koe 'e he Laumālie Mā'oni'oni ke Ne ako'i koe 'i ho'ó kau 'i he konifelenisi lahi. Te Ne 'oatu ha ngaahi fakakaukau 'oku fakataumu'a pē mā'au. Hiki 'a e ngaahi ongo ko 'eni, pea palani ke ngāue'i kinautolu.

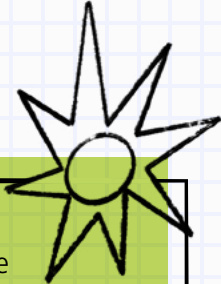




**KO E HĀ NA'E FAKAAFE 'I MAI  
KE U FAI KE TOKONI KIATE AU  
KE U HOKO 'O HANGĒ ANGE  
KO SĪSŪ KALAIŚÍ?**



**“'OKU 'IKAI KE MAHU'INGA TATAU 'A E ME 'A 'OKU LEA 'AKÍ MO E ME 'A 'OKU TAU  
FANONGO KI AÍ PE A MO E ME 'A 'OKU TAU ONGO 'Í.”**

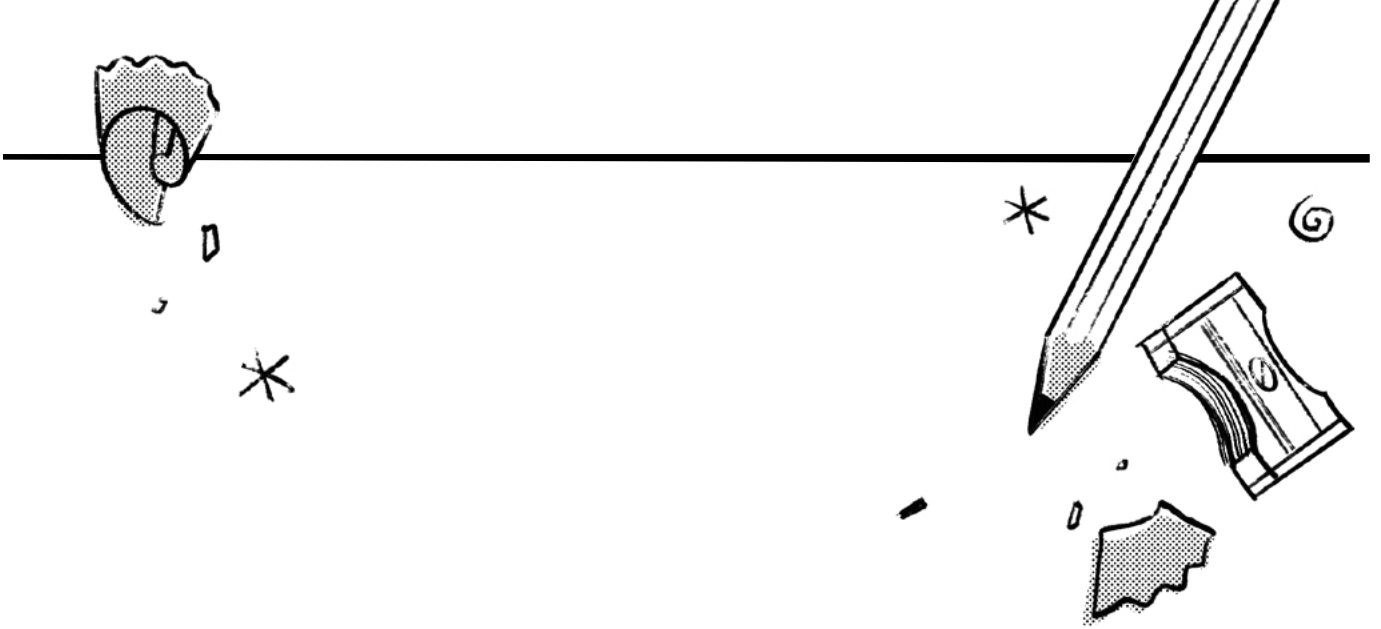


'I h'ó fanongo pe lau 'a e  
ngaahi pōpoaki 'i he konifelenisi  
lahí, lekooti 'a e ngaahi ongo  
fakalaumālie 'okú ke ma'ú. Ko e  
hā ha ngaahi mo'oni 'oku ako'í?  
Ko e hā 'a e me'a 'oku mahu'inga  
taha kiate koé?

# Fakataha 'o e Pongipogi **SĀPATÉ**

**NA'Á KU ONGO 'I FĒFĒ 'A  
E 'OFA 'A E FAKAMO'UÍ  
LOLOTONGA 'A E FAKA-  
TAHA KO 'ENI?**

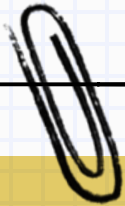




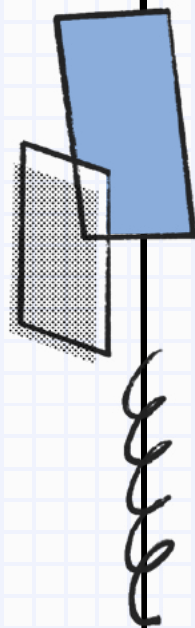
**“OKU HOKO 'A E NGAHI MOMENITI FAKALAUMĀLIE FAKANGALONGATA 'Ā  
'I HE 'ETAU FANONGO 'I HE FA 'A LOTU KI HE KONIFELENISI LAHĪ PEĀ 'I HE  
LELEI ANGE 'ETAU TAUHI 'A E NGAHI FEKAÚ.”**

Eletā Neil L. Andersen<sup>3</sup>

# Fakataha 'o e Ho'atā **SĀPATÉ**

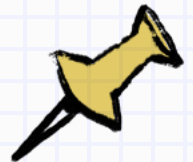
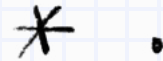


'Oku mahu'inga ke fakafanongo ki he ngaahi pōpoaki 'oku ako'i 'e he tokotaha lea takitaha. 'Oku mahu'inga tatau pē ke fakafanongo ki he ngaahi pōpoaki 'oku feinga 'a e Laumālie Mā'oni'oni ke ako'i kiate koé.



*lllll*

**KO E HĀ NA'Á KU AKO  
FEKAU' AKI MO E FAKA-  
LELEI 'A SĪSŪ KALAIŚÍ?**



*lllll*

**"KUO KOLEA 'E HA NI' IHI TE NAU  
FAI HA LEÁ, HA TOKONI MO HA  
FAKAHINOHINO FAKALANGI 'I  
HE' ENAU TEUTEU ' ENAU  
PŌPOAKÍ... KO 'E KU LOTÚ KE  
FAKAFONU KITAUTOLU ' AKI 'A E  
LAUMĀLIE 'O E 'EIKÍ 'I HE' ETAU  
FANONGO MO AKÓ."**

Palesiteni Thomas S. Monson<sup>4</sup>



# KI'I TAIMI Fiefiá

## 'E lava nai ke ke Ma'u 'a e Tataú?

'Oku 'oatu 'i lalo ha ngaahi seti ke fakatauhoa 'i he folofola. Faka'aonga'i 'a e ngaahi veesi ko 'eni ke tokoni'i koe ke ke fakatauhoa 'a e ngaahi me'a 'i he to'ohemá mo kinautolu 'i he tafa'aki to'omata'ú.

- Tokäteline mo e Ngaahi Fuakava 20:77, 79



- 'Alamá 32:26–30



- Sione 10:14–15



- 1 Samuela 17:38–40, 46–50

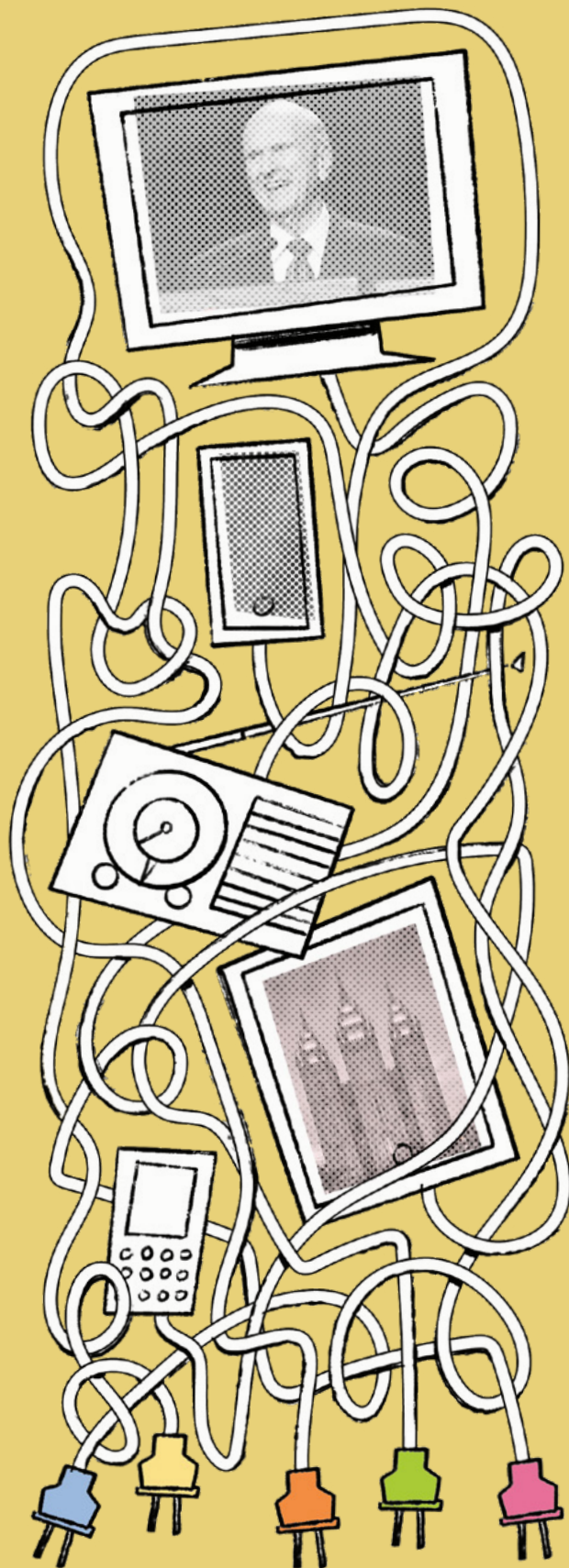
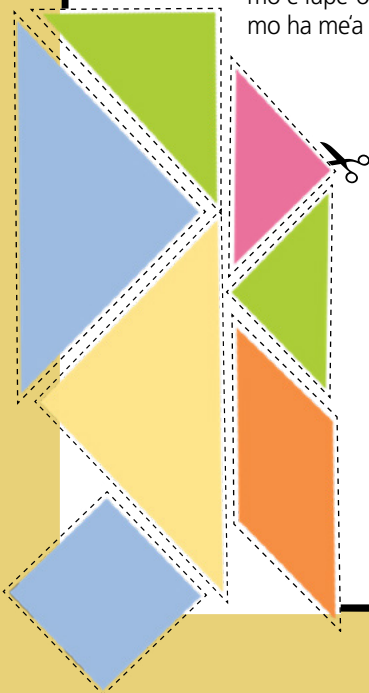


- Ma'ake 6:34–44



## Fe'auhi Tenikalami

Ko e tenikalami ko ha pāsolo faka-Siaina fakakuongamu'a. Kosi 'o to'o 'a e ngaahi fuo 'i he tafa'aki to'ohemá pea vakai kapau 'e lava ke ke toe fa'u 'a e fakatātā 'o e 'āngelo ko Molonai, ko e fo'i te'elangó, mo e lupé 'oku 'asi atu hení. 'E lava nai ke ke fokotu'u mo ha méa kehe?



## Fakafehokotaki ki he Konifelenisi

Muimui 'i he fo'i uaea takitaha ke fakafehokotaki 'i he ngaahi founga kehekehe ke lava 'o kau atu 'i he konifelenisi lahi.

# Pea, HĀ LEVA?



Mahalo pē kuo 'osi 'a e konifelenisi lahi ka ko ho'o a'usia i he me'a na'a ke akó 'oku toki kamata ia. Ko e hā te ke fakahoko ke ngāue ai i he me'a na'a ke fanongo ki ai mo ongo'i? Mahalo pē 'oku lahi 'a e me'a na'a ke ongo'i ke ke ngāue ki ai, ka he 'ikai te ke lava 'o fai faka'angataha ia. Ko e ni'hi 'eni 'o ha ngaahi fehu'i ke tokoni i ho'o palani 'a e ngaahi sitepu hokó:

1. Ko e hā 'okú ke ongo 'i 'oku ue 'i fakalaumālie koe ke ke fakahoko ma 'u pē pe liliu 'i ho 'o mo 'uí?

2. Ko e fē 'i he ngaahi me 'á ni 'okú ke ongo 'i 'oku mahu 'inga taha ke ngāue ki ai 'i he taimi ní?

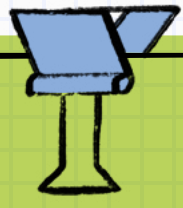
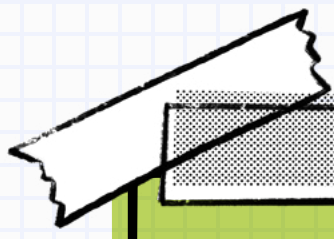
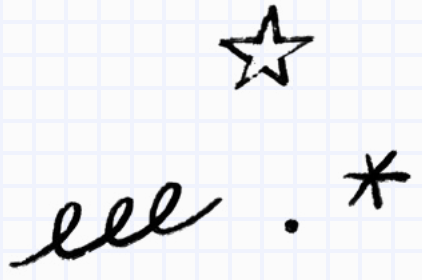
3. Ko e hā ha ngaahi taumu'a 'e lava ke ke fokotu'u pe toe fakatukupā 'í?

4. Ko hai te ke lava 'o kole ki ai ke tokoni atú?

**MA'U'ANGA FAKAMATALÁ**

1. Russell M. Nelson, "Pōpoaki Kamatá," konifelenisi lahi 'o 'Epeleli 2020 (*Ensign* pe *Liahona*, Mē 2020, 7).
2. Robert D. Hales, konifelenisi lahi 'o 'Okatopa 2013 (*Ensign*, pe *Liahona*, Nōvema 2013, 6).

3. Neil L. Andersen, konifelenisi lahi 'o 'Epeleli 2020 (*Ensign* pe *Liahona*, Mē 2020, 21).
4. Thomas S. Monson, "Talitali Fiefia Kimoutolu ki he Konifelenisi," konifelenisi lahi 'o 'Okatopa 2009 (*Ensign* pe *Liahona*, Nōvema 2009, 6).
5. M. Russell Ballard, konifelenisi lahi 'o 'Epeleli 2020 (*Ensign* pe *Liahona*, Mē 2020, 11).



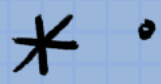
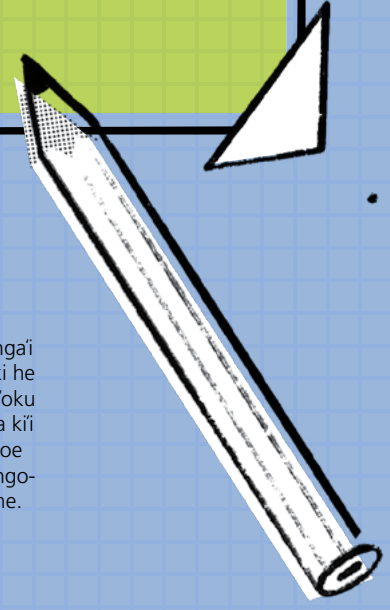
## UE 'I FAKALAUMĀLIE MA 'AU

'I HE 'ETAU FAKAFANONGO KI HE LAUMĀLIÉ LOLOTONGA ... E FAKA 'OSINGA 'O E UIKÉ, FAKAKAUKAU KI HE FEILAULAU TE KE FAKAHOKO KI HE 'EIKÍ 'I HE ANGATONU HE NGAHI 'AHO KA HOKO MAÍ. KE MOU LOTO-TO 'A— 'O VAHEVAHE IA MO HA TAHA 'OKÚ KE FALALA KI AI, PEA MAHULU HAKE AÍ, KĀTAKI 'O FAKA 'AONGA 'I HA TAIMI KE FAKAHOKO IA!"

Palesitēni M. Russell Ballard<sup>5</sup>

## FIE MA 'U HA TATAU LAHI ANGE?

Download pea paaki 'a e kīi tohi ko 'enī 'i he [conference.ChurchofJesusChrist.org](https://www.churchofjesuschrist.org)



© 2021 'e he Intellectual Reserve, Inc. Ma'u 'a e ngaahi totonu fakalao kotoa pē.

'Oku foaki 'a e ngofua ke toe paaki 'a e kīi tohi ko 'enī ke faka'aonga'i fakataautaha pea 'ikai fakakomēsiale. 'Oku kau heni 'a e ngofua ki he kau taki fakauōtī ke nau paaki ha tatau 'o fakafe'unga ki he nīihi 'oku nau ngāue ki ai 'i honau uiui'i. Kuo pau ke paaki kakato 'a e fanga kīi tohi. 'Oku 'ikai kau heni 'a e ngofua ke vahevahe 'i he 'initaneti, toe faka'uHINGA'I kehe pe tufaki 'a e naunau ko 'enī. 'Oku fie ma'u ha ngofua ki hano faka'aonga'i 'a e naunau ko 'enī ki ha toe 'uhinga kehe.

[permissions. ChurchofJesusChrist.org](https://www.churchofjesuschrist.org)

