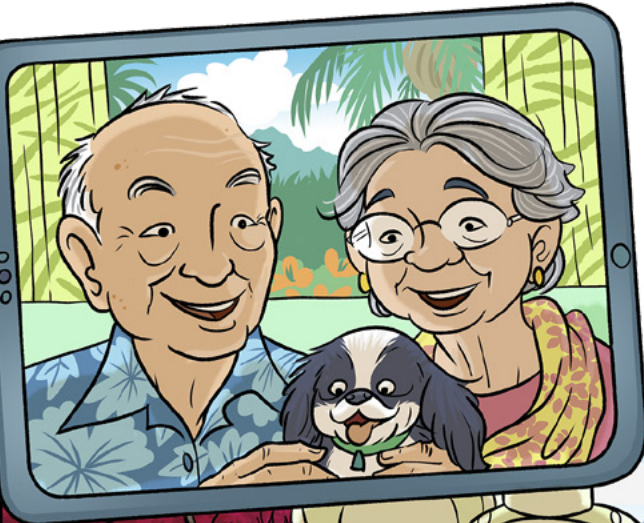


# Kumi Ia!

'Oku talanoa e fāmili ko 'enī mo e ngaahi kui 'oku nau nofo mama 'ó! Te ke lava nai 'o kumi 'a e ngaahi me 'a 'oku fufū 'i laló?



NAFA



POLOSI



HELU PAPA



FAKAMALU



PEPA 'OKU TĀPELUPELU KE NE FAKATAIPE HA FA'AHINGA ME'A

IKA LANU KEHEKEHE



ONGO VA'AKAU KE KAI 'AKI (CHOPSTICKS)

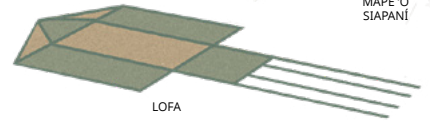


I

MAPE 'O SIAPANI



FULLUTA



LOFA

